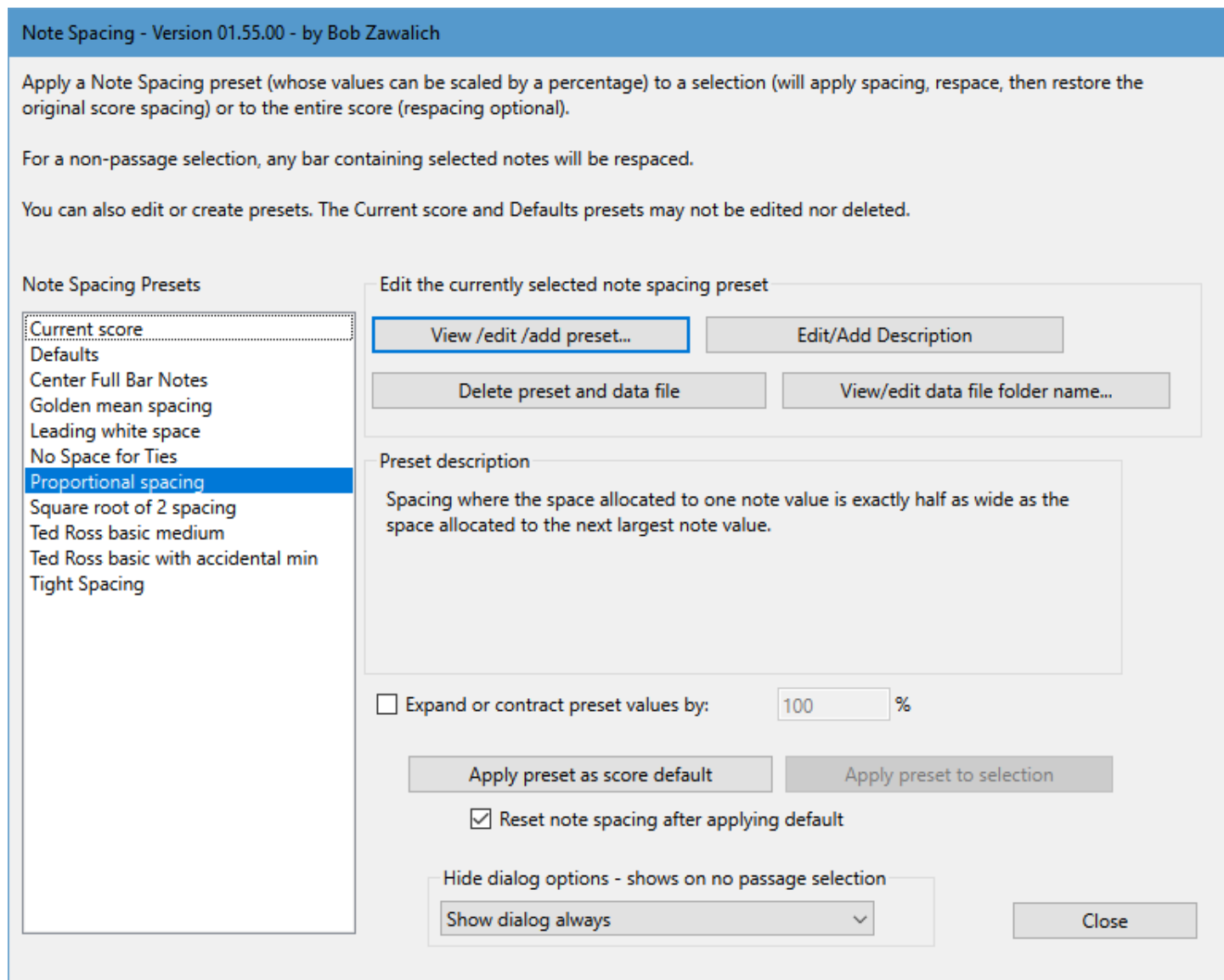


# The Note Spacing Plugin in Sibelius 7

Bob Zawalich Updated April 25, 2020

The Note Spacing plugin can apply a preset group of Note Spacing values (as shown in **Appearance > House Style > Note Spacing Rule**) to a selected area of a score, or to the entire score itself. It can also apply a scaling percentage to the values in the selected note spacing preset, and apply that to a selection or to the entire score.

The plugin will only apply spacing rules to a selection if there is a passage (box) selection when the plugin is run.



When applying a preset or scaling to a selection, the plugin changes the values in the Note Spacing tables, resets note spacing for the selected bars, and then restores the previous Note Spacing values.

When applying a preset or scaling to the score, the plugin changes the values in the Note Spacing tables, and does not restore the original values. It will optionally reset note spacing in all bars after it changes the Note Spacing values.

If you bring up **Appearance > House Style > Note Spacing Rule** before running the plugin, and then apply a preset to a selection, you will see the *same* values in the Note Spacing Rules if you bring it up after running the plugin. It will restore those settings after changing them for the selection.

If you bring up **Appearance > House Style > Note Spacing Rule** before running the plugin, and then apply a preset to the score, you will see the *new* values in the Note Spacing Rules if you bring it up after running the plugin, and any time you reset note spacing, the score will use the newly applied rules.

Once you have chosen a preset, you can choose it have its values adjusted by a percentage to contract (for example, 50%) or expand (for example, 125%) the spacing values in the Note Spacing rule. You can choose the Current score preset and use a scaling percentage to expand or contract the currently active spacing rules.

The plugin always has 2 presets: **Current score**, and **Defaults**. **Defaults** are the settings from the file **blank.sib** that ships with Sibelius. The **Current score** values are the settings that were in force when the plugin started up. These 2 presets cannot be edited or deleted.

Other presets are available. Some are included with the plugin, and you can also create or edit other presets. These presets are contained in text files that are stored by default in the "Note Spacing" subfolder of your default **Scores** folder. These data files can be copied to the appropriate folder of another user's machine to allow you to share any presets you create.

When you choose a folder to use for data files the first time the plugin runs, it is best to create a new folder that will hold only preset data text files. ***You can use an existing folder if you really need to, but the plugin will read in and analyze any text files in the folder, so avoid having any non-preset text files in that folder. You will avoid problems if you accept the default folder name proposed by the plugin.***

The preset files will be stored by default in a subfolder of your default **Scores** folder to make it easier to find the folder if you are given additional preset text files that you want the plugin to use.

The plugin typically brings up a dialog when it is run, though you can optionally turn off the dialog. The dialog will always appear if you run the plugin without a passage selection. If there is a passage selection and the option to inhibit the dialog is active, the plugin will apply a preset or scaling factor (based on the setting of the radio buttons in the dialog) to the selection.

## Viewing, editing, and adding presets

If you select a preset and choose "**View/edit/add**", a dialog will appear that contains the values in the preset. It is similar to the Note Spacing Rules dialog, but instead of checkboxes, there are drop down lists for "allow", "disallow" and "unchanged".

In the dialog, you can leave edit boxes blank or drop-down lists "**unchanged**", and these fields will not be changed when the preset is applied. This is helpful if you have nonstandard settings in your scores; only the fields you specify to change will be changed.

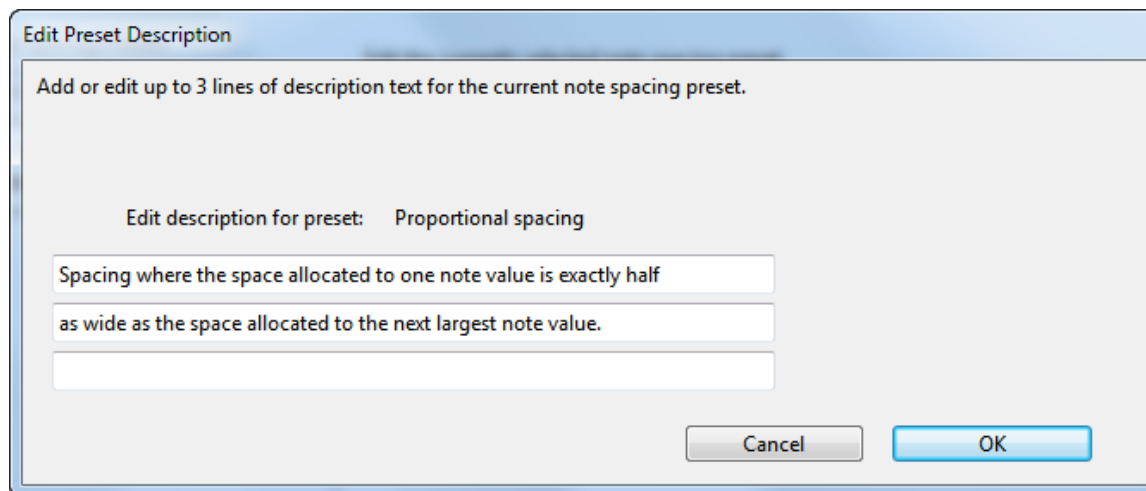
To edit an existing (editable) preset, change the values in the fields of the dialog and hit OK.

To create a new preset, you change the "**Preset name**" field, and then change the values. When you choose OK, the preset values will create a new text file and will be added to the list of available presets.

Use "**Set all unchanged**" to clear all the edits (except "**Preset name**") and set all drop down lists to "unchanged" so you can build a preset from scratch.

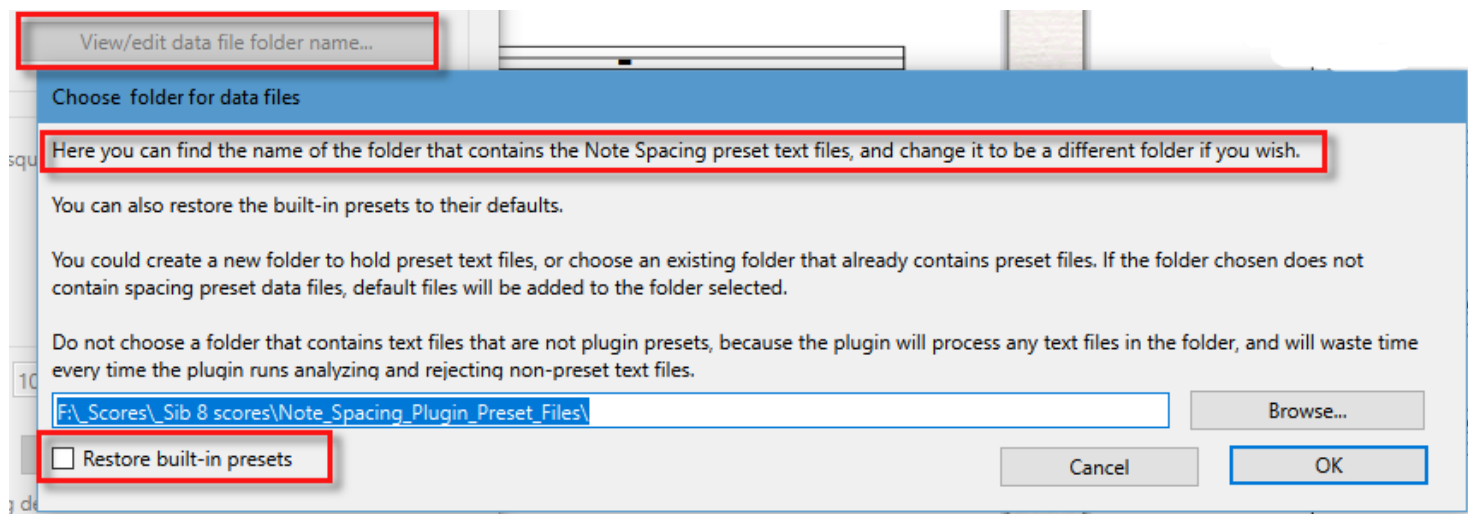
## Adding and Editing Descriptions

Once you have created a preset, you can add or edit its description with the **Edit/Add Description** button. This brings up a dialog that lets you add up to 3 lines of descriptive text. The descriptions will be stored in the preset data files, and are displayed in the main plugin dialog.



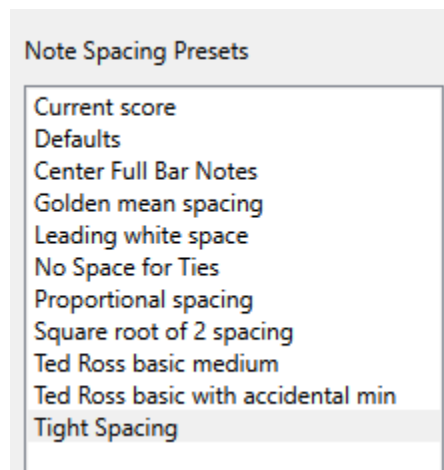
## Viewing and changing the folder used to hold Note Spacing presets

The button **View/edit data file folder name...** will display the name of the folder being used to hold the text files that the data for Note Spacing presets. You can change to a different folder here if you need to. As when creating the preset folder in the first place, either create a new folder that should only contain preset text files, or if switching to an existing folder, do not choose one that contains text files that are not presets.

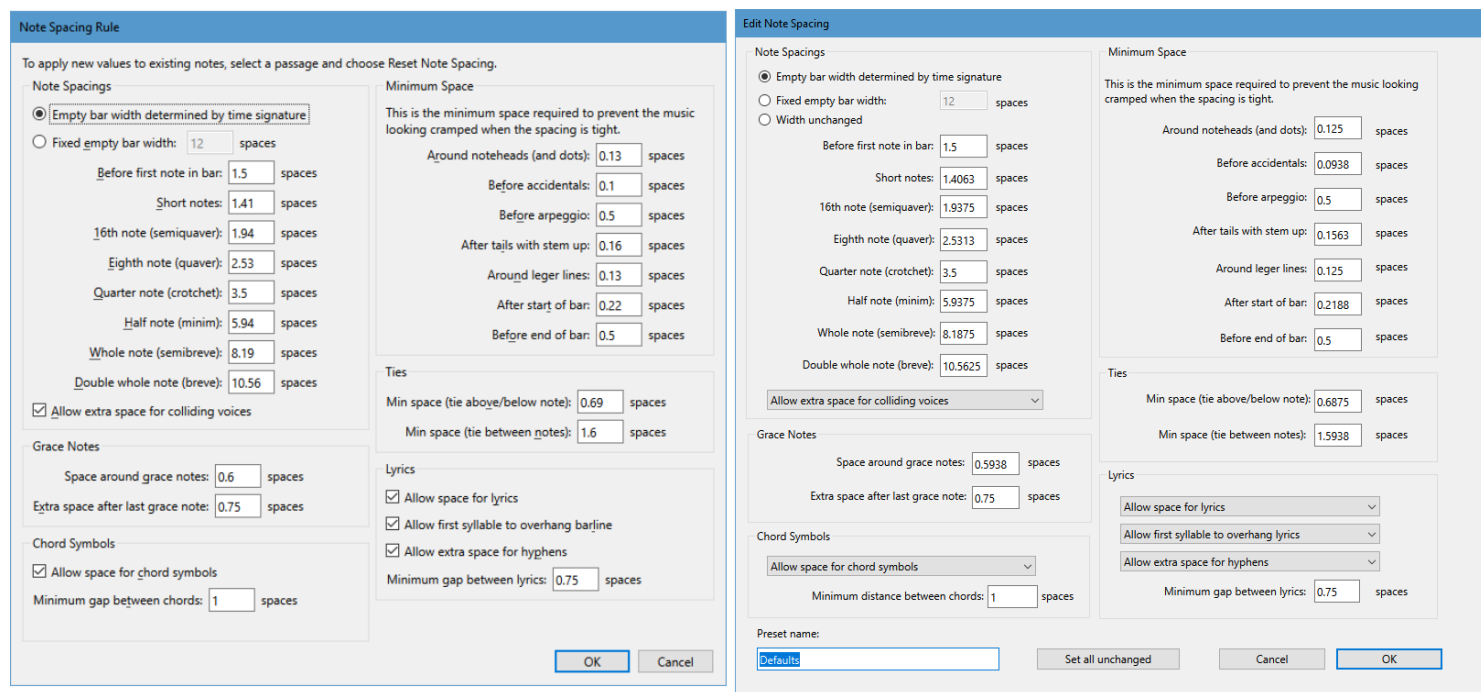


## Appendix: Settings for the Built-in Note Setting Presets

The Preset name field is displayed in the bottom of each preset screenshot. "Current score" is the settings in Note Spacing Rule for the current score at the moment when the plugin is run. "Defaults" is the settings from the file **blank.sib** that ships with Sibelius for use as the Manuscript paper for a blank score, saved at the time when the plugin was written, which was sometime in the Sibelius 7.1 timeframe. The values may not agree with those of **blank.sib** for later versions of Sibelius. You can compare by creating a blank score, looking at **Appearance>Note Spacing Rule**.



As of April 2020 (Sibelius Ultimate 2020.3), the values for **Defaults** and the values from a blank new score are still the same (within rounding). Sibelius displays the values to 2 decimal places but keeps more places internally, so the plugin avoids rounding more than it needs to, trying to avoid loss of accuracy.



# Built-in Preset Values

Edit Note Spacing

Note Spacings

☒ Empty bar width determined by time signature

☐ Fixed empty bar width:  spaces

☐ Width unchanged

Before first note in bar:  spaces

Short notes:  spaces

16th note (semiquaver):  spaces

Eighth note (quaver):  spaces

Quarter note (crotchet):  spaces

Half note (minim):  spaces

Whole note (semibreve):  spaces

Double whole note (breve):  spaces

Allow extra space for colliding voices

Grace Notes

Space around grace notes:  spaces

Extra space after last grace note:  spaces

Chord Symbols

Allow space for chord symbols

Minimum distance between chords:  spaces

Minimum Space

This is the minimum space required to prevent the music looking cramped when the spacing is tight.

Around noteheads (and dots):  spaces

Before accidentals:  spaces

Before arpeggio:  spaces

After tails with stem up:  spaces

Around ledger lines:  spaces

After start of bar:  spaces

Before end of bar:  spaces

Ties

Min space (tie above/below note):  spaces

Min space (tie between notes):  spaces

Lyrics

Allow space for lyrics

Allow first syllable to overhang lyrics

Allow extra space for hyphens

Minimum gap between lyrics:  spaces

Preset name:

Defaults

Set all unchanged

Cancel

OK

5

## Edit Note Spacing

### Note Spacings

☒ Empty bar width determined by time signature

☐ Fixed empty bar width:  spaces

☐ Width unchanged

Before first note in bar:  spaces

Short notes:  spaces

16th note (semiquaver):  spaces

Eighth note (quaver):  spaces

Quarter note (crotchet):  spaces

Half note (minim):  spaces

Whole note (semibreve):  spaces

Double whole note (breve):  spaces

Unchanged space for colliding voices

### Grace Notes

Space around grace notes:  spaces

Extra space after last grace note:  spaces

### Chord Symbols

Unchanged space for chord symbols

Minimum distance between chords:  spaces

### Minimum Space

This is the minimum space required to prevent the music looking cramped when the spacing is tight.

Around noteheads (and dots):  spaces

Before accidentals:  spaces

Before arpeggio:  spaces

After tails with stem up:  spaces

Around leger lines:  spaces

After start of bar:  spaces

Before end of bar:  spaces

### Ties

Min space (tie above/below note):  spaces

Min space (tie between notes):  spaces

### Lyrics

Unchanged space for lyrics

Unchanged first syllable to overhang lyrics

Unchanged extra space for hyphens

Minimum gap between lyrics:  spaces

Preset name:

Center Full Bar Notes

Set all unchanged

Cancel

OK

## Edit Note Spacing

### Note Spacings

☐ Empty bar width determined by time signature

☐ Fixed empty bar width:  spaces

☒ Width unchanged

Before first note in bar:  spaces

Short notes:  spaces

16th note (semiquaver):  spaces

Eighth note (quaver):  spaces

Quarter note (crotchet):  spaces

Half note (minim):  spaces

Whole note (semibreve):  spaces

Double whole note (breve):  spaces

Unchanged space for colliding voices

### Grace Notes

Space around grace notes:  spaces

Extra space after last grace note:  spaces

### Chord Symbols

Unchanged space for chord symbols

Minimum distance between chords:  spaces

### Minimum Space

This is the minimum space required to prevent the music looking cramped when the spacing is tight.

Around noteheads (and dots):  spaces

Before accidentals:  spaces

Before arpeggio:  spaces

After tails with stem up:  spaces

Around leger lines:  spaces

After start of bar:  spaces

Before end of bar:  spaces

### Ties

Min space (tie above/below note):  spaces

Min space (tie between notes):  spaces

### Lyrics

Unchanged space for lyrics

Unchanged first syllable to overhang lyrics

Unchanged extra space for hyphens

Minimum gap between lyrics:  spaces

Preset name:

Golden mean spacing

Set all unchanged

Cancel

OK

## Edit Note Spacing

### Note Spacings

☐ Empty bar width determined by time signature

☐ Fixed empty bar width:  spaces

☒ Width unchanged

Before first note in bar:  spaces

Short notes:  spaces

16th note (semiquaver):  spaces

Eighth note (quaver):  spaces

Quarter note (crotchet):  spaces

Half note (minim):  spaces

Whole note (semibreve):  spaces

Double whole note (breve):  spaces

Unchanged space for colliding voices

### Grace Notes

Space around grace notes:  spaces

Extra space after last grace note:  spaces

### Chord Symbols

Unchanged space for chord symbols

Minimum distance between chords:  spaces

### Minimum Space

This is the minimum space required to prevent the music looking cramped when the spacing is tight.

Around noteheads (and dots):  spaces

Before accidentals:  spaces

Before arpeggio:  spaces

After tails with stem up:  spaces

Around leger lines:  spaces

After start of bar:  spaces

Before end of bar:  spaces

### Ties

Min space (tie above/below note):  spaces

Min space (tie between notes):  spaces

### Lyrics

Unchanged space for lyrics

Unchanged first syllable to overhang lyrics

Unchanged extra space for hyphens

Minimum gap between lyrics:  spaces

Preset name:

Leading white space

Set all unchanged

Cancel

OK



## Edit Note Spacing

### Note Spacings

☐ Empty bar width determined by time signature

☐ Fixed empty bar width:  spaces

☒ Width unchanged

Before first note in bar:  spaces

Short notes:  spaces

16th note (semiquaver):  spaces

Eighth note (quaver):  spaces

Quarter note (crotchet):  spaces

Half note (minim):  spaces

Whole note (semibreve):  spaces

Double whole note (breve):  spaces

Unchanged space for colliding voices

### Grace Notes

Space around grace notes:  spaces

Extra space after last grace note:  spaces

### Chord Symbols

Unchanged space for chord symbols

Minimum distance between chords:  spaces

### Minimum Space

This is the minimum space required to prevent the music looking cramped when the spacing is tight.

Around noteheads (and dots):  spaces

Before accidentals:  spaces

Before arpeggio:  spaces

After tails with stem up:  spaces

Around leger lines:  spaces

After start of bar:  spaces

Before end of bar:  spaces

### Ties

Min space (tie above/below note):  spaces

Min space (tie between notes):  spaces

### Lyrics

Unchanged space for lyrics

Unchanged first syllable to overhang lyrics

Unchanged extra space for hyphens

Minimum gap between lyrics:  spaces

Preset name:

No Space for Ties

Set all unchanged

Cancel

OK

## Edit Note Spacing

### Note Spacings

☐ Empty bar width determined by time signature

☐ Fixed empty bar width:  spaces

☒ Width unchanged

Before first note in bar:  spaces

Short notes:  spaces

16th note (semiquaver):  spaces

Eighth note (quaver):  spaces

Quarter note (crotchet):  spaces

Half note (minim):  spaces

Whole note (semibreve):  spaces

Double whole note (breve):  spaces

Unchanged space for colliding voices

### Grace Notes

Space around grace notes:  spaces

Extra space after last grace note:  spaces

### Chord Symbols

Unchanged space for chord symbols

Minimum distance between chords:  spaces

### Minimum Space

This is the minimum space required to prevent the music looking cramped when the spacing is tight.

Around noteheads (and dots):  spaces

Before accidentals:  spaces

Before arpeggio:  spaces

After tails with stem up:  spaces

Around leger lines:  spaces

After start of bar:  spaces

Before end of bar:  spaces

### Ties

Min space (tie above/below note):  spaces

Min space (tie between notes):  spaces

### Lyrics

Disallow space for lyrics

Unchanged first syllable to overhang lyrics

Unchanged extra space for hyphens

Minimum gap between lyrics:  spaces

Preset name:

Proportional spacing

Set all unchanged

Cancel

OK

## Edit Note Spacing

### Note Spacings

☐ Empty bar width determined by time signature

☐ Fixed empty bar width:  spaces

☒ Width unchanged

Before first note in bar:  spaces

Short notes:  spaces

16th note (semiquaver):  spaces

Eighth note (quaver):  spaces

Quarter note (crotchet):  spaces

Half note (minim):  spaces

Whole note (semibreve):  spaces

Double whole note (breve):  spaces

Unchanged space for colliding voices

### Grace Notes

Space around grace notes:  spaces

Extra space after last grace note:  spaces

### Chord Symbols

Unchanged space for chord symbols

Minimum distance between chords:  spaces

### Minimum Space

This is the minimum space required to prevent the music looking cramped when the spacing is tight.

Around noteheads (and dots):  spaces

Before accidentals:  spaces

Before arpeggio:  spaces

After tails with stem up:  spaces

Around leger lines:  spaces

After start of bar:  spaces

Before end of bar:  spaces

### Ties

Min space (tie above/below note):  spaces

Min space (tie between notes):  spaces

### Lyrics

Unchanged space for lyrics

Unchanged first syllable to overhang lyrics

Unchanged extra space for hyphens

Minimum gap between lyrics:  spaces

Preset name:

Set all unchanged

Cancel

OK

## Edit Note Spacing

### Note Spacings

☒ Empty bar width determined by time signature

☐ Fixed empty bar width:  spaces

☐ Width unchanged

Before first note in bar:  spaces

Short notes:  spaces

16th note (semiquaver):  spaces

Eighth note (quaver):  spaces

Quarter note (crotchet):  spaces

Half note (minim):  spaces

Whole note (semibreve):  spaces

Double whole note (breve):  spaces

Allow extra space for colliding voices ☐

### Grace Notes

Space around grace notes:  spaces

Extra space after last grace note:  spaces

### Chord Symbols

Allow space for chord symbols ☐

Minimum distance between chords:  spaces

### Minimum Space

This is the minimum space required to prevent the music looking cramped when the spacing is tight.

Around noteheads (and dots):  spaces

Before accidentals:  spaces

Before arpeggio:  spaces

After tails with stem up:  spaces

Around leger lines:  spaces

After start of bar:  spaces

Before end of bar:  spaces

### Ties

Min space (tie above/below note):  spaces

Min space (tie between notes):  spaces

### Lyrics

Allow space for lyrics ☐

Allow first syllable to overhang lyrics ☐

Allow extra space for hyphens ☐

Minimum gap between lyrics:  spaces

Preset name:

Set all unchanged

Cancel

OK

## Edit Note Spacing

### Note Spacings

☒ Empty bar width determined by time signature

☐ Fixed empty bar width:  spaces

☐ Width unchanged

Before first note in bar:  spaces

Short notes:  spaces

16th note (semiquaver):  spaces

Eighth note (quaver):  spaces

Quarter note (crotchet):  spaces

Half note (minim):  spaces

Whole note (semibreve):  spaces

Double whole note (breve):  spaces

Allow extra space for colliding voices ☐

### Grace Notes

Space around grace notes:  spaces

Extra space after last grace note:  spaces

### Chord Symbols

Allow space for chord symbols ☐

Minimum distance between chords:  spaces

### Minimum Space

This is the minimum space required to prevent the music looking cramped when the spacing is tight.

Around noteheads (and dots):  spaces

Before accidentals:  spaces

Before arpeggio:  spaces

After tails with stem up:  spaces

Around leger lines:  spaces

After start of bar:  spaces

Before end of bar:  spaces

### Ties

Min space (tie above/below note):  spaces

Min space (tie between notes):  spaces

### Lyrics

Allow space for lyrics ☐

Allow first syllable to overhang lyrics ☐

Allow extra space for hyphens ☐

Minimum gap between lyrics:  spaces

Preset name:

Set all unchanged

Cancel

OK

## Edit Note Spacing

### Note Spacings

☒ Empty bar width determined by time signature

☐ Fixed empty bar width:  spaces

☐ Width unchanged

Before first note in bar:  spaces

Short notes:  spaces

16th note (semiquaver):  spaces

Eighth note (quaver):  spaces

Quarter note (crotchet):  spaces

Half note (minim):  spaces

Whole note (semibreve):  spaces

Double whole note (breve):  spaces

Unchanged space for colliding voices

### Grace Notes

Space around grace notes:  spaces

Extra space after last grace note:  spaces

### Chord Symbols

Unchanged space for chord symbols

Minimum distance between chords:  spaces

### Minimum Space

This is the minimum space required to prevent the music looking cramped when the spacing is tight.

Around noteheads (and dots):  spaces

Before accidentals:  spaces

Before arpeggio:  spaces

After tails with stem up:  spaces

Around leger lines:  spaces

After start of bar:  spaces

Before end of bar:  spaces

### Ties

Min space (tie above/below note):  spaces

Min space (tie between notes):  spaces

### Lyrics

Unchanged space for lyrics

Unchanged first syllable to overhang lyrics

Unchanged extra space for hyphens

Minimum gap between lyrics:  spaces

Preset name:

Tight Spacing

Set all unchanged

Cancel

OK