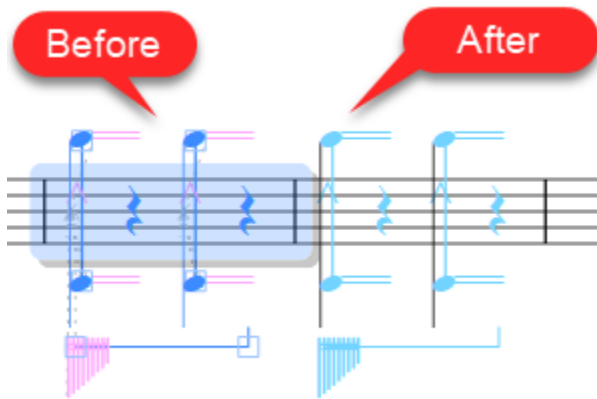


The Filter All Plugin and Other Things that Change the Selection

Bob Zawalich May 13, 2020

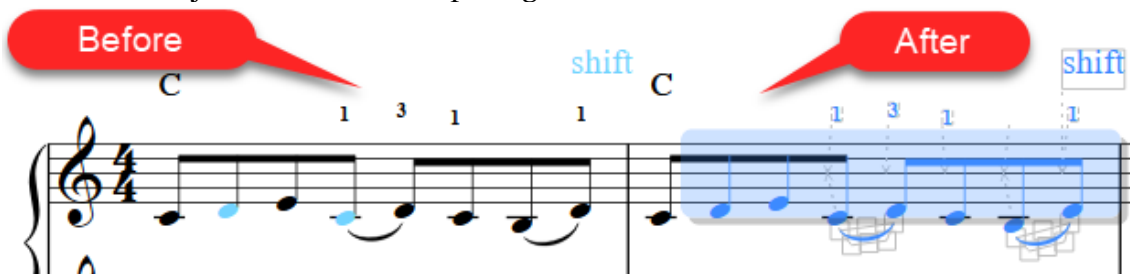
I was working on a project where I was building notational elements from lots of components, and I wanted to make a selection that included the objects I had built, not in a passage, without having to select each object separately. I thought there must be something in Sibelius that does this. If it were in a single voice, I could filter for that voice, but I had some constructs in multiple voices. I looked for a plugin but saw nothing that did exactly what I wanted, so, because I could, I wrote a new plugin, **Filter All**, that would start with a passage selection and select all the contained objects separately, like this:



Since I had been looking around, I thought I might do a writeup on some tools that can be used to modify a selection. Here are a set of tools that change a selection without explicitly selecting a specific object. The links will take you to the plugin description on the **Sibelius Plugin Download Page**. The differences between some of these plugins is pretty subtle, so be sure you know what you are getting! Unless otherwise noted, plugins listed below were written by Bob Zawalich. The illustrations apply to the command or plugin immediately above them.

Passage selection ⇔ multiple selection

- [Filter All](#) plugin: Changes a passage selection into individually selected objects.
- [Unfilter Selection](#) and [Unfilter Selection Whole Bars](#) plugins (by Kenneth Gaw): Converts one or more selected objects into a selected passage.



Passage selection ⇔ System Passage Selection

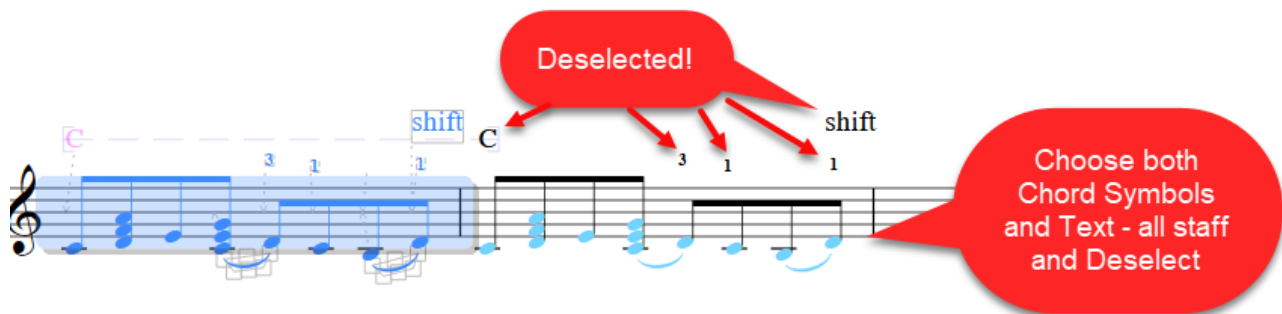
- Home>Selection>Select System passage: Converts a passage selection (blue box) to a system selection (purple box), or makes a system passage selection from the first object selected in a non-passage selection.



- [System Passage To Passage Selection](#) plugin: Converts a system selection (purple box) to a passage selection (blue box).

Deselecting objects from a selection

- Home Filter>Advanced Filter: Filters object and either selects or deselects the chosen objects.
- [Filter With Deselect](#) plugin: Filters objects and either selects or deselects the chosen objects.

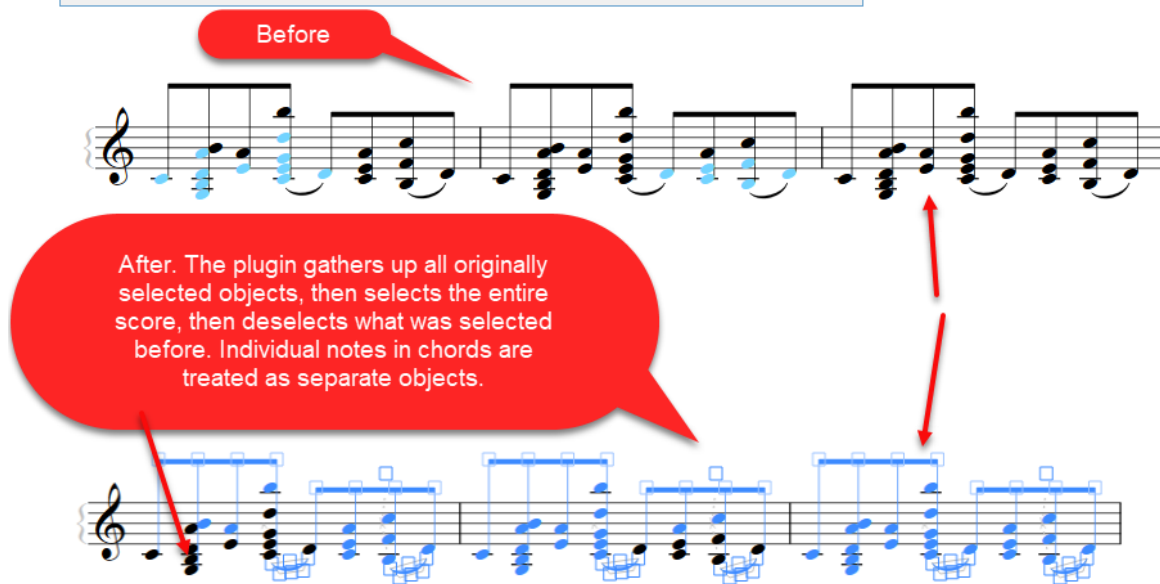
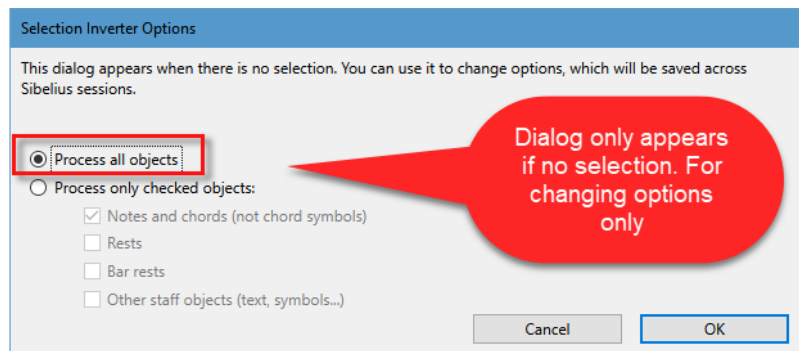


Inverting a selection

- [Inverse Select Notes](#) plugin: **Selects any unselected notes in a chord** consisting of more than 1 note, and **unselects previously selected notes**.



- [Selection Inverter](#) plugin: Inverts the contents of the bars in the score that contain selected objects, and selects all objects in previously unselected bars. A dialog appears only if run with no selection.

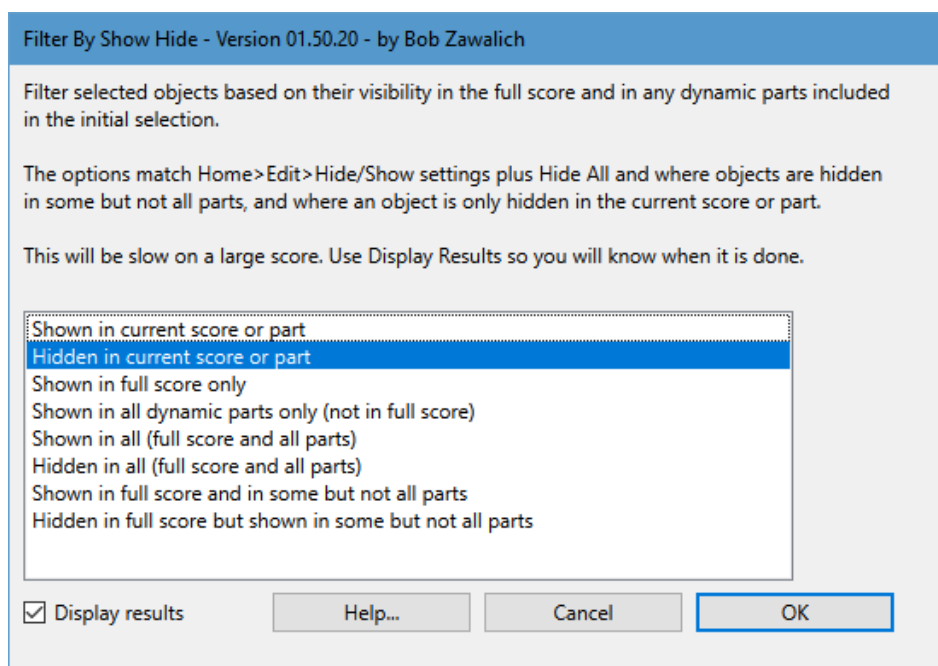


Filtering Hidden Objects

- [Filter Hidden Objects](#) plugin: Filters objects that are hidden by the Show-Hide operation, or text that includes the tilde (~) or both. There is an option to select or deselect.

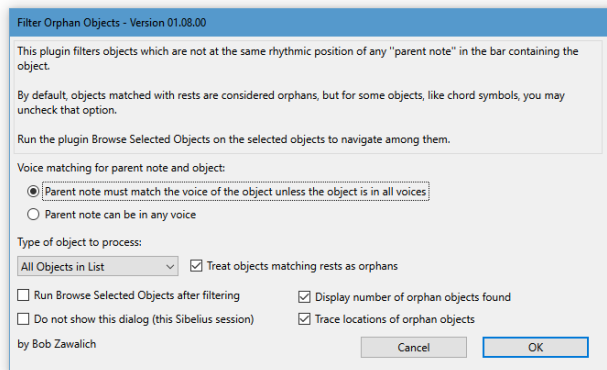


- [Filter By Show Hide](#) plugin: Filters selected objects based on their visibility in the full score and in any dynamic parts included in the initial selection.



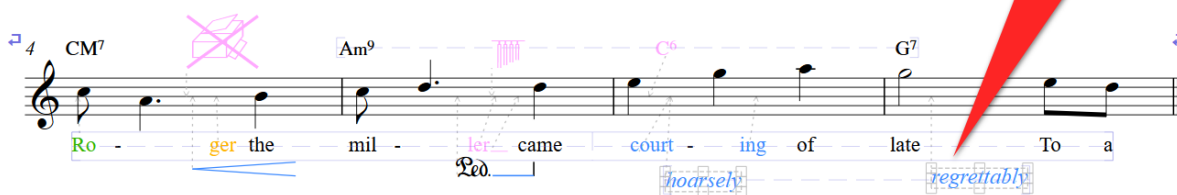
Miscellaneous Filtering

- [Filter Orphan Objects](#) plugin: Filters objects which are not at the same rhythmic position of any "parent note" in the bar containing the object.

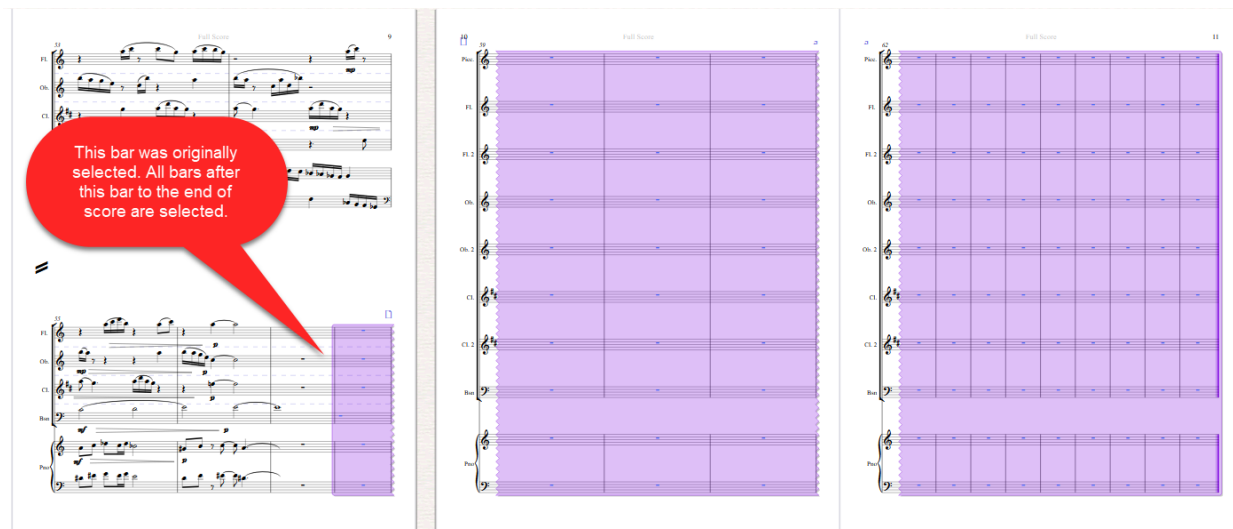


Orphaned Objects

A few orphaned lyrics, chord symbols, symbols, lines and staff text



- [Select All Following](#) plugin: Makes a system (double purple box) selection of all the bars following the last bar in the current selection. This could be useful for deleting to the end of the score.



- [Move Selection Left/Right](#) plugin (by Kenneth Gaw): Move one or more objects left or right to the next contextually sensible location. Selections containing notes and rests can be moved, as can selections containing lyrics, dynamics etc., without notes. Most system objects (e.g. tempo indications, repeat signs) can also be moved. This is really fun to play with!

original

shift

C 1 3 1 1 C 1 3 1 1

mp *pp* *mp* *pp*

Moved right once

Moved twice

There are many other similar and useful selection and filtering commands not mentioned here. Search for **Selection** or **Filter** in the Sibelius Reference, or search in the alphabetical and searchable list of plugins maintained by Philip Rothman at <https://www.nycmusicservices.com/musicresources/#sibelius-plugin-ins>.