

Three plugins that look at the fonts in your scores

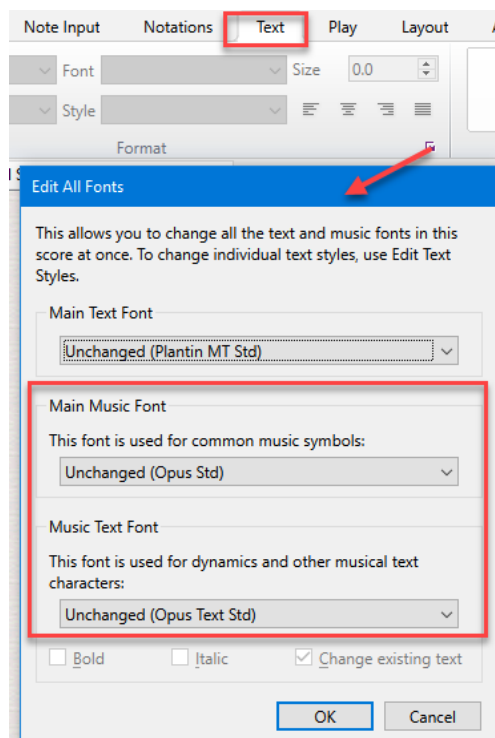
In 2016, I wrote a post for Scoring Notes called [House style fonts and identifying house style families in Sibelius](#). You may be in the situation where you want to set your score back to the default values used by the original House Style for the score, but you don't know which House Style to use.

The basic idea of the blog post was that while you cannot directly tell which house style was used in a particular score, you could make a good guess by looking at 3 main fonts.

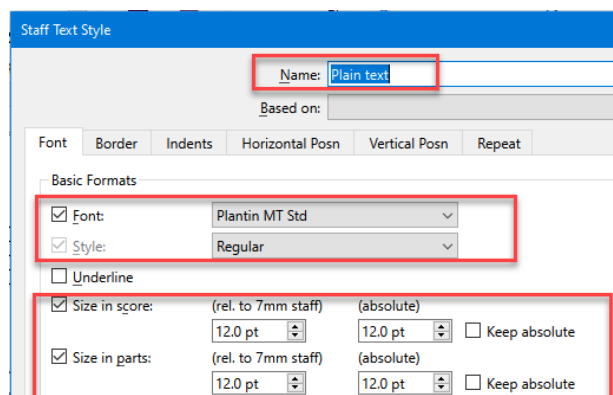
House Styles can be grouped into families of similar styles, based on three fonts (which I call the "font family"):

- The **Main Music Font**, used for noteheads and most music symbols;
- The **Music Text Font**, used for dynamics and some other music text characters; and
- The font used for the **Plain Text** Text Style, which is used for most text frons in Sibelius 7 and later.

You can find the first 2 fonts in Text>Edit All Fonts, along with the defunct "Main Text Font".



You can find the **Plain Text** font information from Text>Edit Text Style:



At the time, a plugin could determine the **Main Music Font** and **Music Text Font**, but not the **Plain Text** font, so the post includes a PDF file that shows the fonts used in the House Styles that ship with Sibelius, so

you could compare those fonts to the fonts used in your score, and cut down the number of House Styles to consider.

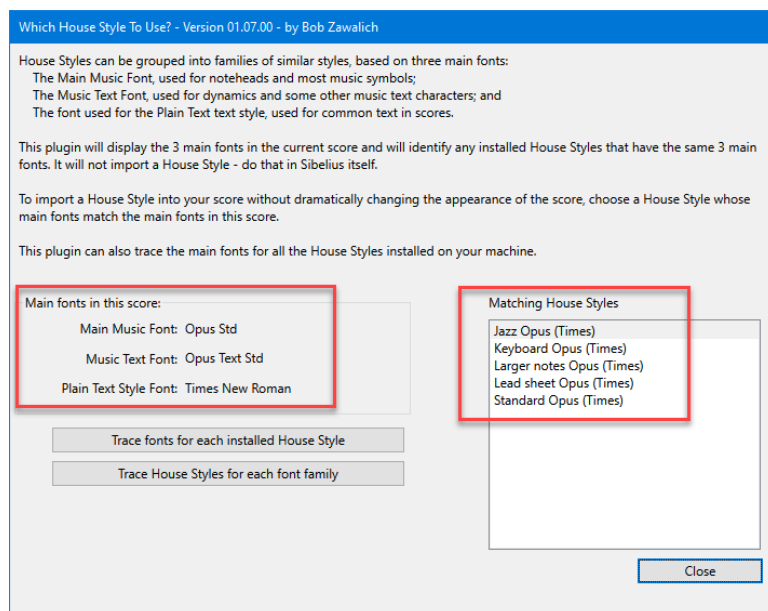
In 2012, shortly before Daniel Spreadbury and the other Sibelius development staff left the company, they were working on a final release, and Daniel was trying to add some small features to the Manuscript programming language used for plugins, as a favor to me. He was not able to get them in to their final release.

In mid-2020, I discovered that some of the code he had written was actually in the build system, and was active as far back as Sibelius 7.5. This included some code to get the initial font and font size of a text object. What I had really asked for was a way to find the font and font size for a Text Style, but we could see that if I created a temporary piece of text using a Text Style, and found its text name and size, this would be equivalent to getting that information for the text style. So now I found there was a way to find out the font used in the **Plain Text** Text Style.

Using that ability, I wrote 3 plugins that use these fonts

- **Which House Style To Use**
- **House Styles For Manuscript Papers**
- **Trace Fonts For Text Styles**

Which House Style To Use determines the font family from your score. It then creates a temporary score, and imports each House Style installed on your machine into that score, recording the font family for each House Style. It will then put up a list of all the installed House Styles, if any, that match the fonts in your score, so you can find matching House Styles immediately, without needing to look them up in a table. Also, the House Styles include any user-defined House Styles you have.



In this case, there are several matching House Styles for this score.

The 2 buttons in the dialog can provide more general information:

- **Trace fonts for each installed House Style** gives the font family used for each installed House Style:

House style
Main Music Font;Music Text Font;Plain Text Font
Handwritten
Reprise Std;Reprise Text Std;Inkpen2 Script Std
Jazz Inkpen2

Inkpen2 Std;Inkpen2 Text Std;Inkpen2 Script Std
Jazz Opus (Times)
Opus Std;Opus Text Std;Times New Roman
Jazz Reprise
Reprise Std;Reprise Text Std;Reprise Script Std
Keyboard Helsinki (Georgia)
Helsinki Std;Helsinki Text Std;Georgia
...

- **Trace House Styles for each font family** gives the House Styles that match each of the font families found in the installed House Styles:

Font family: Main Music Font;Music Text Font;Plain Text Font
House styles with this font family

Helsinki Std;Helsinki Text Std;Georgia
Keyboard Helsinki (Georgia)
Standard Helsinki (Georgia)
Helsinki Std;Helsinki Text Std;Palatino
Podium
Inkpen2 Std;Inkpen2 Text Std;Inkpen2 Script Std
Jazz Inkpen2
Keyboard Inkpen2
Lead sheet Inkpen2
Standard Inkpen2
Opus Std;Opus Text Std;Arial
Keyboard Opus (Arial)
Standard Opus (Arial)
Opus Std;Opus Text Std;Georgia
Keyboard Opus (Georgia)
Standard Opus (Georgia)
Opus Std;Opus Text Std;Quicksand
Moderna
Opus Std;Opus Text Std;Times New Roman
Jazz Opus (Times)
Keyboard Opus (Times)
Larger notes Opus (Times)
Lead sheet Opus (Times)
Standard Opus (Times)
Reprise Std;Reprise Text Std;Inkpen2 Script Std
Handwritten
...

You might be able to use this information to decide which House Style you want to use when creating a new score, or use it to understand existing scores.

House Styles For Manuscript Papers looks at all the Manuscript Papers you have currently installed, tells you the font family each uses, and tries to match the Manuscript Paper to House Styles that have the same font family. For each Manuscript Paper, it creates a new temporary score using that Manuscript Paper, and extracts the font family from the score. Since there are about 75 shipping Manuscript Papers, this can take a few minutes to complete. Here is a list of the Manuscript Papers on my machine at the moment. Each entry has 3 fields, separated by a "~", so it can be read into a spreadsheet.

We can see from this that the **String quartet** Manuscript Paper, which has the entry

String quartet~Helsinki Std;Helsinki Text Std;Palatino~Podium

has the font family

Helsinki Std;
Helsinki Text Std;
Palatino

which matches the House Style **Podium**, but the Manuscript Paper **Voice + keyboard**

Voice + keyboard~Helsinki Std;Opus Text Std;Palatino~<No match>

has the font family

**Helsinki Std;
Opus Text Std;
Palatino**

which does not match any of the shipping House Styles.

Manuscript Paper Name~Font family: Main Music Font;Music Text Font;Plain Text Font~House styles with this font family

Accordion~Helsinki Std;Helsinki Text Std;Palatino~Podium
Bass staff~Opus Std;Opus Text Std;Quicksand~Moderna
Big band~Reprise Std;Reprise Text Std;Inkpen2 Script Std~Handwritten
Blank~Helsinki Std;Helsinki Text Std;Palatino~Podium
Brass band~Helsinki Std;Helsinki Text Std;Palatino~Podium
Brass choir~Helsinki Std;Helsinki Text Std;Palatino~Podium
Brass quartet~Helsinki Std;Helsinki Text Std;Palatino~Podium
Brass quintet~Helsinki Std;Helsinki Text Std;Palatino~Podium
Brass trio~Helsinki Std;Helsinki Text Std;Palatino~Podium
Cello~Helsinki Std;Helsinki Text Std;Palatino~Podium
Chamber Jazz Septet~Opus Std;Opus Text Std;Quicksand~Moderna
Choir barbershop~Helsinki Std;Helsinki Text Std;Palatino~Podium
Choir reduction~Helsinki Std;Helsinki Text Std;Palatino~Podium
Choir reduction + organ~Helsinki Std;Helsinki Text Std;Palatino~Podium
Choir SATB~Helsinki Std;Helsinki Text Std;Palatino~Podium
Choir SATB + organ~Helsinki Std;Helsinki Text Std;Palatino~Podium
Choir SATB + piano~Helsinki Std;Helsinki Text Std;Palatino~Podium
Choir SSA~Helsinki Std;Helsinki Text Std;Palatino~Podium
Choir SSA + piano~Helsinki Std;Helsinki Text Std;Palatino~Podium
Choir TTBB~Helsinki Std;Helsinki Text Std;Palatino~Podium
Choir TTBB + piano~Helsinki Std;Helsinki Text Std;Palatino~Podium
Concert band~Helsinki Std;Helsinki Text Std;Palatino~Podium
Concert band, small~Helsinki Std;Helsinki Text Std;Palatino~Podium
Cowbell~Opus Std;Opus Text Std;Quicksand~Moderna
Drum corps, battery~Helsinki Std;Helsinki Text Std;Palatino~Podium
Drum corps, brass~Helsinki Std;Helsinki Text Std;Palatino~Podium
Drum corps, percussion~Helsinki Std;Helsinki Text Std;Palatino~Podium
Guitar~Helsinki Std;Helsinki Text Std;Palatino~Podium
Guitar + tab~Opus Std;Opus Text Std;Quicksand~Moderna
Guitar tab~Opus Std;Opus Text Std;Quicksand~Moderna
Handbells (1 staff)~Opus Std;Opus Text Std;Quicksand~Moderna
Handbells (2 staves)~Opus Std;Opus Text Std;Quicksand~Moderna
Harp~Helsinki Std;Helsinki Text Std;Palatino~Podium
Hymn~Helsinki Std;Helsinki Text Std;Palatino~Podium
Jazz combo, 2 horns~Opus Std;Opus Text Std;Quicksand~Moderna
Jazz combo, 3 horns~Opus Std;Opus Text Std;Quicksand~Moderna
Jazz combo, 4 horns~Opus Std;Opus Text Std;Quicksand~Moderna
Jazz quartet~Opus Std;Opus Text Std;Quicksand~Moderna
Lead sheet~Opus Std;Opus Text Std;Quicksand~Moderna
Lute tablature~Helsinki Std;Helsinki Text Std;Palatino~Podium
Marching band 1~Helsinki Std;Helsinki Text Std;Palatino~Podium
Marching band 2~Helsinki Std;Helsinki Text Std;Palatino~Podium
Mariachi band~Helsinki Std;Helsinki Text Std;Palatino~Podium
Marimba~Opus Std;Opus Text Std;Quicksand~Moderna
Military band~Helsinki Std;Helsinki Text Std;Palatino~Podium
Orchestra, Classical~Helsinki Std;Helsinki Text Std;Palatino~Podium
Orchestra, concert~Helsinki Std;Helsinki Text Std;Palatino~Podium
Orchestra, film~Helsinki Std;Helsinki Text Std;Palatino~Podium
Orchestra, modern~Helsinki Std;Helsinki Text Std;Palatino~Podium
Orchestra, Romantic~Helsinki Std;Helsinki Text Std;Palatino~Podium
Orff body percussion~Opus Std;Opus Text Std;Quicksand~Moderna
Orff classroom 1~Opus Std;Opus Text Std;Quicksand~Moderna
Orff classroom 2~Opus Std;Opus Text Std;Quicksand~Moderna
Percussion corps 1~Helsinki Std;Helsinki Text Std;Palatino~Podium

Percussion corps 2~Helsinki Std;Helsinki Text Std;Palatino~Podium
Piano~Helsinki Std;Helsinki Text Std;Palatino~Podium
Pop group~Opus Std;Opus Text Std;Quicksand~Moderna
R & B band~Opus Std;Opus Text Std;Quicksand~Moderna
Salsa band~Helsinki Std;Helsinki Text Std;Palatino~Podium
Saxophone quartet~Helsinki Std;Helsinki Text Std;Palatino~Podium
School band 6-8~Helsinki Std;Helsinki Text Std;Palatino~Podium
School band 9-12~Helsinki Std;Helsinki Text Std;Palatino~Podium
School band K-5~Helsinki Std;Helsinki Text Std;Palatino~Podium
String orchestra~Helsinki Std;Helsinki Text Std;Palatino~Podium
String quartet~Helsinki Std;Helsinki Text Std;Palatino~Podium
String trio~Helsinki Std;Helsinki Text Std;Palatino~Podium
Treble staff~Opus Std;Opus Text Std;Quicksand~Moderna
Ukulele~Opus Std;Opus Text Std;Quicksand~Moderna
Violin~Helsinki Std;Helsinki Text Std;Palatino~Podium
Voice + keyboard~Helsinki Std;Opus Text Std;Palatino~<No match>
Voice, Guitar, Piano~Helsinki Std;Opus Text Std;Palatino~<No match>
Wind quartet~Helsinki Std;Helsinki Text Std;Palatino~Podium
Wind quintet~Helsinki Std;Helsinki Text Std;Palatino~Podium
Woodwind choir~Helsinki Std;Helsinki Text Std;Palatino~Podium
Woodwind trio~Helsinki Std;Helsinki Text Std;Palatino~Podium

Trace Fonts For Text Styles

While a plugin can determine which plugin you have installed, and which House Styles and Manuscript Papers are installed, it does not have access to the properties of Text Styles, and does not know which Text Styles are defined in your score.

It can look at **Text** objects in your score and find which Text Styles are actually used by objects in the score, and it can create **Text**, **System Text**, and **Lyrics** objects that use various Text Styles.

But it does not know which fonts or font sizes are used by the Text Styles in your score.

For **Trace Fonts For Text Styles**, I hand-built a list of the shipping Text Styles from a recent version of Sibelius Ultimate. I create a temporary **Text** object in the score for each Text Style in the list, and record the initial font and font size. I also look at all **Text** and **System Text** objects in the score, and if the Text Styles are not in the list of Text Styles, the styles will be added to the list, so we can at least display user-defined Text Styles that are used in the score.

The output is a comma-separated list, which is intended for easy use in a spreadsheet, and the plugin is also designed to be called from another plugin, returning its output in an array of strings.

***** Fonts from a hard-coded list of built-in Text Styles and for user-defined Text Styles that are used in this score:**

***** For all following text styles, the data format will be: <house style name>,<initial font name>,<initial font size in points>,<(initial font size in 32nds of a space>**

***** Font sizes are based on a staff size of 7 mm. Some rounding of the font size is likely.**

1st and 2nd endings,Century Schoolbook,11.0,(71)
Auto page break warnings,Century Schoolbook,11.9,(77)
Bar numbers (parts),Century Schoolbook,11.0,(71)
Bar numbers,Century Schoolbook,10.1,(65)
Block lyrics,Century Schoolbook,11.5,(74)
Boxed system text,Century Schoolbook,10.1,(65)
Boxed text (on blank page),Century Schoolbook,11.9,(77)
Boxed text,Century Schoolbook,10.1,(65)
Chord diagram fingering,Century Schoolbook,8.1,(52)
Chord diagram fret numbers,Century Schoolbook,6.0,(39)
Chord diagram fret,Century Schoolbook,6.0,(39)
Chord diagram string names,Century Schoolbook,6.0,(39)
Chord symbol,Opus Chords Std,11.0,(71)
Comment,Tahoma,8.2,(53)

Common symbols,Opus Std,19.8,(128)
Composer (on blank page),Century Schoolbook,11.9,(77)
Composer,Century Schoolbook,11.9,(77)
Copyright,Century Schoolbook,7.0,(45)
Dedication (on blank page),Century Schoolbook,10.1,(65)
Dedication,Century Schoolbook,10.1,(65)
Drum set legend,Century Schoolbook,6.0,(39)
Duration at end of score,Century Schoolbook,10.1,(65)
Expression Custom Inkpen,Inkpen2,16.0,(103)
Expression,Century Schoolbook,11.9,(77)
Figured bass (extras),Opus Figured Bass Extras Std,19.8,(128)
Figured bass,Opus Figured Bass Std,10.1,(65)
Fingering,Century Schoolbook,7.0,(45)
Footer (inside edge),Century Schoolbook,10.1,(65)
Footer (outside edge),Century Schoolbook,10.1,(65)
Footnote,Century Schoolbook,11.9,(77)
Function symbols,Opus Function Symbols Std,11.9,(77)
Guitar fingering (p i m a),Century Schoolbook,10.1,(65)
Header (after first page),Century Schoolbook,9.0,(58)
Header (after first page, inside edge),Century Schoolbook,11.9,(77)
Header,Century Schoolbook,11.9,(77)
Hit points,Century Schoolbook,10.1,(65)
Instrument change announcement,Century Schoolbook,11.9,(77)
Instrument change,Century Schoolbook,11.9,(77)
Instrument name (cues),Century Schoolbook,11.9,(77)
Instrument name at top left (on blank page),Century Schoolbook,14.0,(90)
Instrument name at top left,Century Schoolbook,14.0,(90)
Instrument names,Century Schoolbook,11.9,(77)
Lyricist,Century Schoolbook,11.0,(71)
Lyrics (chorus),Century Schoolbook,11.5,(74)
Lyrics above staff,Century Schoolbook,11.5,(74)
Lyrics line 1,Century Schoolbook,11.5,(74)
Lyrics line 2,Century Schoolbook,11.5,(74)
Lyrics line 3,Century Schoolbook,11.5,(74)
Lyrics line 4,Century Schoolbook,11.5,(74)
Lyrics line 5,Century Schoolbook,11.5,(74)
Metric modulation,Opus Metronome Std,11.9,(77)
Metronome mark,Century Schoolbook,8.5,(55)
Multirests (numbers),Opus Std,22.0,(142)
Multirests (tacet),Century Schoolbook,11.9,(77)
Musical structure,Century Schoolbook,11.9,(77)
Nashville chord numbers,Century Schoolbook,11.0,(71)
Note name noteheads,Opus Note Names Std,19.8,(128)
Note tails,Opus Std,19.8,(128)
Ornaments,Opus Ornaments Std,19.8,(128)
Page numbers,Century Schoolbook,11.9,(77)
Percussion instruments,Opus Percussion Std,19.8,(128)
Percussion stickings,Century Schoolbook,7.0,(45)
Plain system text,Century Schoolbook,11.9,(77)
Plain text (on blank page),Century Schoolbook,11.9,(77)
Plain text, centered (on blank page),Century Schoolbook,11.9,(77)
Plain text, right (on blank page),Century Schoolbook,11.9,(77)
Plain text,Century Schoolbook,11.9,(77)
Rehearsal marks,Century Schoolbook,12.4,(80)
Repeat (D.C./D.S./To Coda),Century Schoolbook,10.1,(65)
Repeat bar numbers,Century Schoolbook,11.0,(71)
Roman numerals,Opus Roman Chords Std,11.5,(74)
Small text,Century Schoolbook,10.1,(65)
Special noteheads etc.,Opus Special Std,19.8,(128)
Special symbols (extra),Opus Special Extra Std,19.8,(128)
Special symbols,Opus Special Std,19.8,(128)
Subtitle (on blank page),Century Schoolbook,13.0,(84)
Subtitle,Century Schoolbook,13.0,(84)
Tablature letters,Times New Roman,9.0,(58)
Tablature numbers,Arial,8.1,(52)
Technique custom papyrus,Papyrus,9.0,(58)
Technique,Century Schoolbook,11.9,(77)
Tempo,Century Schoolbook,10.1,(65)
Tenuto,Century Schoolbook,11.0,(71)

Time signatures (film score),Opus Big Time Std,50.1,(323)
Time signatures (huge),Opus Std,50.1,(323)
Time signatures (large),Opus Std,30.1,(194)
Time signatures (one staff only),Opus Std,20.0,(129)
Time signatures,Opus Std,20.0,(129)
Timecode,Century Schoolbook,10.1,(65)
Tiny text,Century Schoolbook,6.0,(39)
Title (on blank page),Century Schoolbook,20.0,(129)
Title custom Comic Sans,Comic Sans MS,37.5,(242)
Title,Century Schoolbook,20.0,(129)
Tuplets,Century Schoolbook,10.5,(68)
Worksheet footer (first page, l),Century Schoolbook,10.1,(65)
Worksheet footer (first page, r),Century Schoolbook,10.1,(65)
Worksheet header (first page, l),Century Schoolbook,11.9,(77)
Worksheet header (first page, r),Century Schoolbook,11.9,(77)

These plugins are available for Sibelius 7.5 or later only, and can be installed using File>Plug-ins>Install Plug-ins. **Which House Style To Use** and **House Styles For Manuscript Papers** are in category Engravers' Tools, and **Trace Fonts For Text Styles** is in category Developers' Tools.