

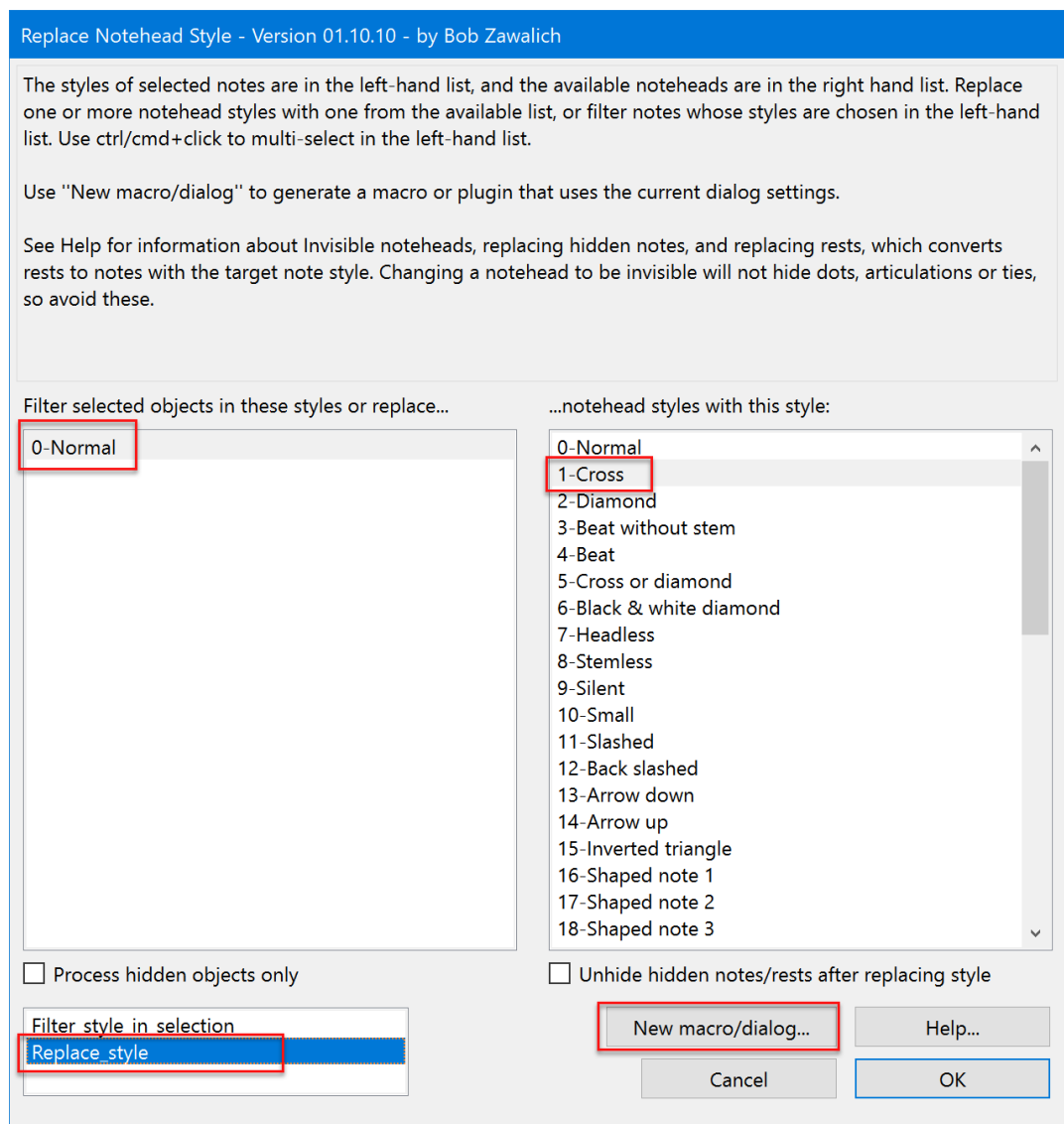
# Tutorial - Generating Notehead Mapping **Plugins** with Replace Notehead Style

Bob Zawalich August 22, 2023

If you want to map **Normal** noteheads to another notehead many times, you might want to generate plugins that will just do a single translation without having to choose the new notehead in a dialog each time.

The plugin **Replace Notehead Style** is set up to easily generate such plugins. To use this facility you need have the plugins **Execute Commands**, **Custom Search Shortcut**, and **cmdutils** installed.

To start the process, choose the notehead mapping you want in **Replace Notehead Style**'s dialog. Choose **Replace\_style**, then press **New macro/dialog**.



A **New Plugin** window will appear. Check only the option to generate a new plugin and press OK.

**New Plugin / Append to Command List**

You can generate a custom plugin that runs the command line that has just been traced.

You can also add the command line to the Command List used by the plugin Execute Commands. The added command line will be at the bottom of the Command List the next time Execute Commands is run.

If you generate a plugin you will be given a chance to review and edit the new plugin location and name. You can just press OK/Enter in that dialog to accept the default name and location.

If you generate a plugin you will need to close and restart Sibelius before you can use it.

Current command line:

```
RunPluginEntry_cu(ReplaceNoteheadStyle.plg, API_ProcessSelection, 0, Normal, str_Action, Replace_style, str_Num_Original_Styles, 1, str_StyleNew, Cross, str_fProcessHiddenObjectsOnly, no, str_fUnhideReplacedNotes, no)
```

☒ Generate a new plugin from the command line

☐ Append the command line to the Command List in Execute Commands

Cancel OK

You will see another **New Dialog** plugin (brought up by the **Execute Commands** plugin). You will need to choose a plugin category/subfolder to hold your generated plugins. I made a new “Noteheads\_Map” subfolder for this example, but any plugin subfolder will do.

**New Plugin - Generate and Install New Plugin - Version 01.81.20**

Generate a new plugin that will run the commands specified in the Command List.

Enter the file name (no spaces), the name that appears on the plugin menu (it should usually be the file name with spaces between words), and the plugin category(subfolder) where the new plugin will be installed. File and menu names produced by New Plugin must have, or will be given, the suffix “\_CP” - see Help in the main dialog.

The generated plugin uses Sibelius.Execute commands that can either use a language-independent command id, (the default) or a language-dependent, but possibly more readable, local command name.

You will need to close and restart Sibelius before you can edit or run the new plugin.

Names in category: xxxxxxTraceExpressionText

Name (without spaces): ReplaceNoteheadStyle\_Normal\_Replace\_style\_1\_Cross\_N\_N (.CP)

Menu name: Replace Notehead Style Normal Replace\_style 1 Cross N N (.CP)

Plugin category (subfolder) name:

- InstrumentNames
- Layout
- Lines
- Lines\ManuScript Keystrokes
- Lyrics
- MusicXML
- My Plugins
- Navigation
- NotePerformer
- Notehead\_Maps**
- Notes and Rests
- Notes and Rests\Scale Notehead Sizes
- Other
- Other Authors
- Other Authors\Check Rhythmic Notation Sibelius ...

Format of Sibelius.Execute statements

☒ <command ids>

☐ Cmd(<local command name>)

☐ Include command comments in code

☐ Trace generated plugin instructions

Cancel OK

You also need to name the plugin. The name generated by **New Plugin** contains the original plugin name and some of the parameters from the dialog, but it is a pretty awkward name, so I suggest renaming it to something easier to grasp. In my case I typed **NHNormalCross** into the Name field, then pressed **Fill menu name** to get a name with spaces between words. **NHNormalCross** stands for **Note Head map Normal to Cross**, and is a usable template if you make a bunch of these plugins.




The screenshot shows the 'New Plugin' dialog box with the following fields and annotations:

- Name (without spaces):** NHNormalCross. A red box highlights this field. A red speech bubble points to it with the text: "Choose a simpler name. Type into top line with no spaces".
- Menu name:** N H Normal Cross. A red speech bubble points to this field with the text: "Use this to add spaces to the name for menus".
- category (subfolder) name:** (empty field).
- Fill menu name** button: A red box highlights this button.

If you type OK, a plugin will be generated and installed in the Plugin category(subfolder) you chose.

You might as well generate several mapping plugins while you are here.

Here are some plugins I generated this way:

g > Avid > Sibelius > Plugins > Notehead_Maps	
Name	Date modified
 NHNormalBlackWhiteDiamond.plg	8/22/2023 5:35 PM
 NHNormalCross.plg	8/22/2023 5:36 PM
 NHNormalDiamond.plg	8/22/2023 5:33 PM

Before you can run the plugins, you will need to shut down and restart Sibelius.

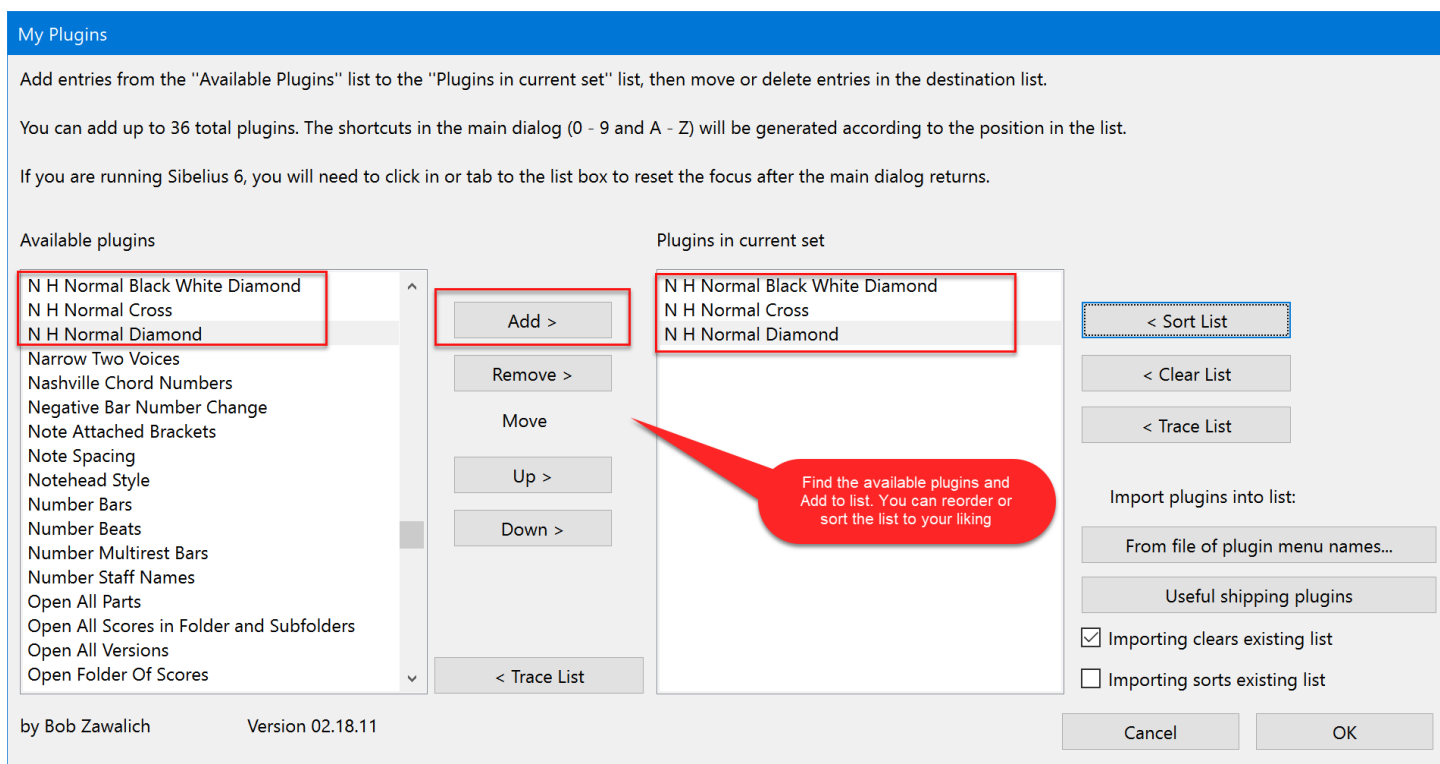
Now you can run the new plugins after making a selection that contains notes with normal noteheads.

## Using My Plugins to run these plugins.

You can run such plugins from a menu or **Command Search**, or give each plugin a keyboard shortcut, or use a plugin like **Run Plugin By Name**, but this type of group is well suited to the installable plugin **My Plugins**.

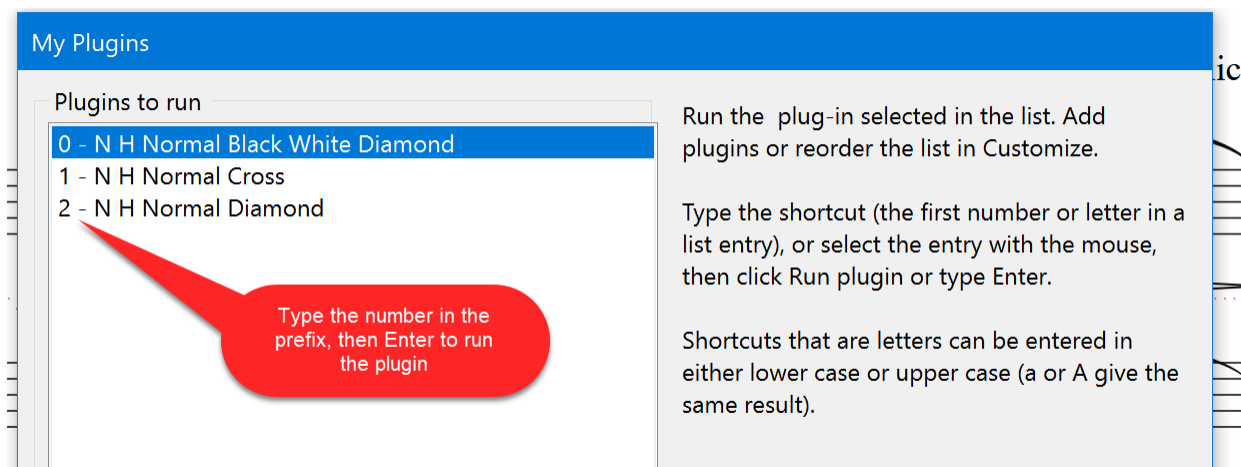
You can read about My Plugins in the Scoring Notes post: <https://www.scoringnotes.com/tips/quick-keyboard-access-to-your-sibelius-plug-ins/>.

Assuming you have the general idea, install and run **My Plugins**, and press **Customize**. If you have already added plugins to **My Plugins**, you will see them, and you can either clear the list and add the new ones or add the new ones to the existing list. Here I add the 3 plugins I created to an empty list:



Now you might want to assign a keyboard shortcut to **My Plugins**.

Type the shortcut to bring up **My Plugins**, then type a number or letter that identifies the plugin you want, and press **Enter** or click OK to run your chosen plugin.



It will thus take 3 keypresses to run any one of these plugins. This provides a smooth workflow for repeated actions. It will be even more useful when you have around 10 such plugins.