

Installable Plugins that Filter Notes

Bob Zawalich March 30, 2024 updated March 9, 2026

These plugins either duplicate some of the Note functions of the **Advanced Filter** or provide filters not available in the **Advanced Filter**.

Many of the **Advanced Filter** replacements were written so you could assign a shortcut to the commands and possibly have the command run without bringing up a dialog. This could be especially useful for macros and plugins generated with the **Execute Commands** plugin.

Some of these plugins have a **New plugin...** button, which allows you to generate a command containing the current settings of a dialog, and produce a command line to use with the plugin **Execute Commands**, or auto-generate a stand-alone plugin, which can run without displaying the dialog, and to which a shortcut may be assigned.

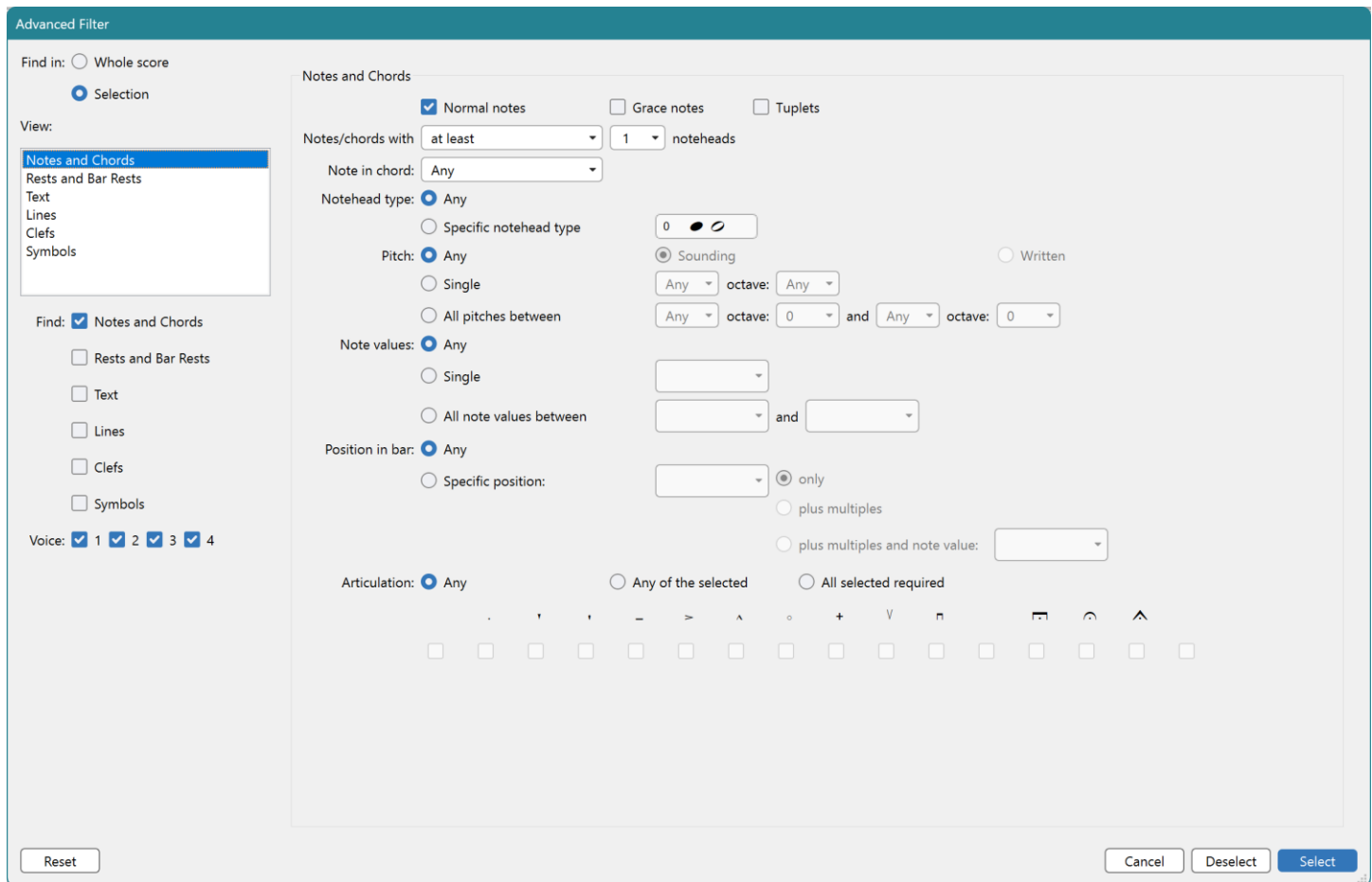
*In this document, plugins with a **New Plugin** button have a * after their name.* For more details on **New Plugin**, see: [Using plugins with a New Plugin Button to generate plugins](#)

Table of Contents

Installable Plugins that Filter Notes	1
Relationship to the Advanced Filter	2
New Plugin and Browse Selected Objects	2
Note filtering plugins by Bob Zawalich	4
Filter Notes By Pitch Name *	4
Filter Notes By Notehead *	4
Filter Notes By Position *	5
Filter Notes By Beat *	5
Filter Notes By Duration *	6
Filter Other *	6
Filter With Deselect *	7
Filter By Accidentals	7
Filter Notes Tied-To	8
Filter Notes Tied To – Simple	8
Filter Notes By String	8
Filter Notes And Rests	9
Filter Notes With Dangling Ties	9
Filter Note Arpeggios Jazz Artic	9

Relationship to the Advanced Filter

Some of these plugins work as subsets of the **Advanced Filter's** Note filters. The **Advanced Filter** is very powerful, but it may be intimidating. The plugins isolate portions of **Advanced Filter**.



New Plugin and Browse Selected Objects

Some of these plugins have a **New plugin...** button, which allows you to generate a command containing the current settings of a dialog, and produce a command line to use with the plugin **Execute Commands**, or auto-generate a stand-alone plugin, which can run without displaying the dialog, and to which a shortcut may be assigned.

In this document, plugins with a **New Plugin** button have a * after their name.

Some plugins also have a checkbox to allow you to bring up the **Browse Selected Objects** plugin once filtering is complete, to make it easier to navigate among the selected objects.

If a plugin does not have the option to call **Browse Selected Objects**, you can run **Execute Commands**, add the filter plugin you want to the command list, then add a call to **Browse Selected Objects** immediately afterward. You can then auto-generate a new plugin that will run those 2 commands in order.

Add commands to the Command List, then choose Execute to run them. Duplicate Command List entries are disallowed, so repeated command names will be given a suffix to make them unique.

You can export or import a list of commands. The exported files will be stored in the "Execute_Commands" subfolder of your default Scores folder, and will have the extension ".dat".

You can also generate a new plugin that contains the commands in the Command List. Click New Plugin... for details.

Command categories Find in list ▼

- All
- Appearance tab
- Clef Styles
- Cmdutils Add Intervals
- Cmdutils Add Objects
- Cmdutils Engraving Rules
- Cmdutils Exit Plugin
- Cmdutils Other
- Cmdutils Selection
- Cmdutils Text Format
- Cmdutils Transpose Intervals
- Cmdutils View
- Cmdutils X Y Offsets
- File tab
- Home tab
- Keypad (accidentals)
- Keypad (all)
- Keypad (articulations)
- Keypad (beams/tremolos)
- Keypad (common notes)
- Keypad (jazz articulations)
- Keypad (more notes)
- Layout tab
- Line Styles
- Moving
- Navigation
- Notations tab
- Note Input tab
- Noteheads
- Other
- Parts tab
- Play tab
- Plug-ins**
- Review tab
- Selection
- Text Styles

- Backup Plug-in for Developers (Plug-in 659)
- Backup Plugin Preferences (Plug-in 59)
- Banjo Play Fretted 5th String (Plug-in 144)
- Banjo Play Fretted 5th Transpose (Plug-in 143)
- Barline Tool (Plug-in 465)
- Barnum First Last In System (Plug-in 60)
- Barnum System End (Plug-in 61)
- Bars Per System In Selection (Plug-in 29)
- Batch Transpose (Plug-in 155)
- Batch Transpose 12 Keys (Plug-in 156)
- Batch Transpose Bass Clef (Plug-in 157)
- Beam 3 Eighths In Common Time (Plug-in 466)
- Beamed Note Groups (Plug-in 571)
- Bookmark (Plug-in 536)
- Boomwhacker® Note Colors (Plug-in 869)
- Box Line Fixed Width (Plug-in 504)
- Bracket Chord Symbols (Plug-in 177)
- Bracket Expression Text (Plug-in 760)
- Bracket Notes (Plug-in 505)
- Bracket Text (Plug-in 761)
- Breaks (Plug-in 708)
- Browse Selected Objects (Plug-in 537)**
- Browse Wildcards (Plug-in 253)
- Calculate Statistics (Plug-in 158)
- Call Plug (Plug-in 248)
- Cautionary Time Signatures (Plug-in 443)
- Change Case (Plug-in 762)
- Change Dynamics (Plug-in 804)
- Change Font Size (Plug-in 763)
- Change Live Playback (Plug-in 103)
- Change Note Rest Duration (Plug-in 572)
- Change Selected Barlines (Plug-in 149)
- Change Split Point (Plug-in 725)
- Change Text Accidental Size (Plug-in 429)
- Change Tuplet Ratio (Plug-in 932)
- Check Attachments (Plug-in 888)

category: Plug-ins
 Id: BrowseSelectedObjects.plg

Add Command To Command List ▼

Remove selected command ▼ Remove All ▼

Filter Notes By Notehead (Plug-in 110)
 Browse Selected Objects (Plug-in 537)

// Up ▲ Down ▼ Execute Command List ▲

Add // Comment ▲... Execute Command ▲

Edit Command ▲... Paste Command... ▲

Export List ▲ ... Import List ▲ ...

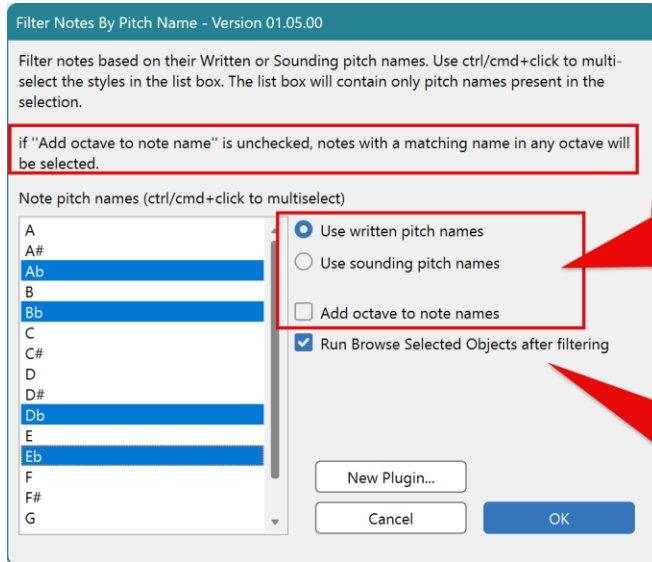
Run Command Macro... **New Plugin...**

Trace All Commands Trace List ▲ Execute Current Command ▲ Help... Trace List ▲ Cancel

Note filtering plugins by Bob Zawalich

In this document, plugins with a **New Plugin** button have a * after their name.

Filter Notes By Pitch Name *



List can be sounding, sounding+octave, written, written+octave. Written is only significant in a transposing instrument in a transposing score.

I find this really helpful for finding what was filtered.

Filter Notes By Notehead *

Filter Notes By Position *

Filter Notes By Position - Version 01.13.41 - by Bob Zawalich

Filter notes, rests, and/or tuplets at specific positions from the start of their bars or parent tuplets. Bar rests will not be filtered.

Positions are w = whole, h = half, q = quarter, e = 8th, x = 16th, y = 32nd, optionally followed by 1 to 3 periods (rhythm dots).

The special position value "0" indicates the start of a bar or tuplet (position 0 (zero)).

Compare positions with the operators = (equal to), < (less than), > (greater than), <= (less than or equal to), and >= (greater than or equal to).

The operator "=multiple" will match all objects whose positions are a multiple of the position value. Use "=mult+start" to always include the first object in the bar or tuplet.

Positions are calculated from the start of the parent bar, except that for the "within tuplets" types, the position is relative to the parent tuplet.

Position values ----- Operators

w
h
q
e
x
y
0
w.
w..
w...

=
<
>
<=
>=
=multiple
=mult+start

Objects to filter

Notes and chords and rests
Notes and chords only
Rests only
Tuplets
Notes and chords and rests within tuplets
Notes and chords only within tuplets
Rests only within tuplets
Tuplets within tuplets

Select / deselect

select
deselect

Do not show this dialog (this Sibelius session)

New Plugin... Help...
Cancel OK

Filter Notes By Beat *

Filter Notes By Beat - Version 01.13.41 - by Bob Zawalich

Filter notes, rests, and/or tuplets at a specific beat position from the start of their bars.

The size of a beat is determined by the current time signature in each selected bar. Beat 1 is always the start of the bar.

Any time signature with a numerator divisible by 3 (except 3 itself) is considered compound time. For compound time, the beat size is 3 times the size represented by the denominator of the time signature. For simple or complex signatures, the beat size is the size represented by the denominator. For 3/4, 4/4, 5/4, ... 126/4, the beat size is a quarter note. For 4/8 or 11/8, the beat size is an 8th note. For 6/8, 9/8 and 12/8, the beat size is 3 times that of an 8th note, or a dotted quarter. "Use simple-time beat size for compound time signatures" makes the beat size for compound time the same as for simple time.

Use whole numbers or fractions that are a multiple of 2 to match part of a beat. (1.5, 1.25, 1.125...)

Compare beats with the operators = (equal to), < (less than), > (greater than), <= (less than or equal to), and >= (greater than or equal to).

The operator "=multiple" matches objects whose beat positions are exact multiples of the beat size. It may not match the first note/tuplet in the bar.

Beat----- Operators

1

=
<
>
<=
>=
=multiple

Objects to filter

Notes and chords and rests
Notes and chords only
Rests only
Tuplets

Select / deselect

select
deselect

Use simple-time beat size for compound time signatures
 Do not show this dialog (this Sibelius session)

New Plugin... Help...
Cancel OK

Filter Notes By Duration *

Filter Notes By Duration - Version 01.16.52 - by Bob Zawalich

Filter notes and/or rests with specific durations.

Durations are l = long, d = double whole, w = whole, h = half, q = quarter, e = 8th, x = 16th, y = 32nd, s = 64th, t = 128th. Apply 0 to 3 dots in the second listbox.

Compare durations with the operators = (equal to), < (less than), > (greater than), <= (less than or equal to), and >= (greater than or equal to).

Durations	no dot	Operator	Objects to filter	Select/deselect
l (long)		=	Notes and chords and rests	select
d (double whole)	no dot	<	Notes and chords only	deselect
w (whole)	single	>		
h (half)	double	<=		
q (quarter)	triple	>=		
e (8th)				
x (16th)				
y (32nd)				
s (64th)				
t (128th)				

Do not show this dialog (this Sibelius session)

New Plugin... Help...
Cancel OK

Filter Other *

Filter Other - Version 03.26.25 - by Bob Zawalich

Object to Filter

- Bars With Chord Symbols
- Bars With Lyrics
- Bars With Notes In Multiple Voices
- Clefs
- Colored Notehead Styles
- Colored Objects
- Cue Size Objects
- Expression Text Dynamics
- Grace Notes
- Hidden Objects (not ~)
- Key Signature Changes
- MIDI messages
- Magnetic Layout Settings
- Note Pitch (chromatic written)
- Noteheads
- Notes By Duration
- Notes By Number of Notes
- Notes In Parentheses
- Notes On Staff Lines
- Notes On Staff Spaces
- Notes Under Tuplets
- Notes With Accidentals In Parentheses
- Notes With Cautionary Accidentals
- Notes With Hidden Accidentals
- Notes With Normal Accidentals
- Notes With Slide
- Notes With Visible Accidentals
- Quartertones
- Special Barlines
- Symbols
- Text Styles
- Tied Notes (with LV tie)
- Tied Notes (with normal tie)
- Tied Notes (with tie-into tie)
- Time Signatures
- Tremolos and Buzz Rolls
- Tuplets Plus Notes Under Tuplets

Choose the type of object to filter. If appropriate, type or select a style name.

*** Choose Select or Deselect to continue.

1

1

Show number of objects found (this session)

Trace object locations

Restore original selection if no matches were made

Do not show this dialog (this Sibelius session)

New Plugin...
Cancel Deselect Select

Filter With Deselect *

Filter With Deselect - Version 01.80.03 - by Bob Zawalich

Choose the type of object to select or deselect from the current selection. Use ctrl/cmd-click to choose multiple list entries from either list. *** THE 2 LISTBOXES ARE INDEPENDENT! Normal clicking in a list will clear other entries in that list, but will not clear the other list box unless "Click clears other list" is chosen. Press a "Clear this list" button to clear an entire list.

Voice 1

Voice 2

Voice 3

Voice 4

Text - All staff - no lyrics

Text - All system

Text - Technique

Text - Expression

Text - Fingering

Text - MIDI Messages

Text - Harp Pedal Diagrams

Text - Rehearsal Mark Style

Rehearsal Marks

Lyrics

Lyrics Line 1

Lyrics Line 2

Lyrics Line 3

Lyrics Line 4

Lyrics Line 5

Lyrics Above Staff

Lyrics (Chorus)

Block Lyrics

Dynamics

Lines - All

Lines - All staff

Lines - All system

Lines - Hairpins

Lines - Pedal

Lines - Slurs

Lines - style Line

Highlights

Chord symbols - All

Chord symbols - Sib 6+

Chord Symbols - Legacy

Annotations

Comments

Tuplets

Notes and Chords Only

Notes and Chords and Tuplets

Notes and Chords and Tuplets and Slurs

Notes and Chords and Rests Only

Notes and Chords and Tuplets and Rests

Notes and Chords and Tuplets and Rests and Slurs

Notes with Articulations

Notes with Fermatas

Chord - Top Note

Chord - 2nd Note from Top

Chord - 3rd Note from Top

Chord - 4th Note from Top

Chord - 5th Note from Top

Chord - Bottom Note

Chord - Single Note Only

Rests

Rests with Fermatas

Bar Rests with Fermatas

Repeat Bars

Grace notes - All

Grace notes - Acciaccaturas (/)

Grace notes - Appoggiaturas (no /)

Symbols - All

Symbols - Normal-sized

Symbols - Cue-sized

Symbols - Grace note-sized

Symbols - Cue grace note-sized

Objects - Cue-sized

Objects - Hidden

Objects - Play on Pass Off Sometimes

Graphics

Clef changes

Instrument Changes

Page Number Changes

Use both lists Clear this list ^ ^ Clear this list

Click clears other list

Also filter derived user-defined text and lines

Do not show this dialog again (this Sibelius session)

Filter By Accidentals

Filter By Accidentals - Version 01.38.00 - by Bob Zawalich

This plugin selects notes or chord symbols according to their accidentals.

Only Sibelius 6 (non-legacy) chord symbols will be filtered, and the choice is based solely on the root note, not the bass note.

Hiding a note or accidental does not affect whether this plugin (or Sibelius) considers the accidental to be visible. Prior to Sibelius version 7.1.3, determining the visibility of an accidental is imperfect, so check the output visually.

Flat Double flat Quarter flat

Sharp Double sharp Three quarter flat

Natural Triple flat (notes only) Quarter sharp

Triple sharp (notes only) Three quarter sharp

Filter notes

Filter all notes with specified accidentals, ignoring visibility

Only filter notes with visible accidentals

Only filter notes without visible accidentals

Filter chord symbols (non-legacy; root, not bass)

Trace number of filtered objects

Use written pitch for transposing instruments

Use sounding pitch

Filter root names for notes only:

All root names

Checked root names only

C D E

F G

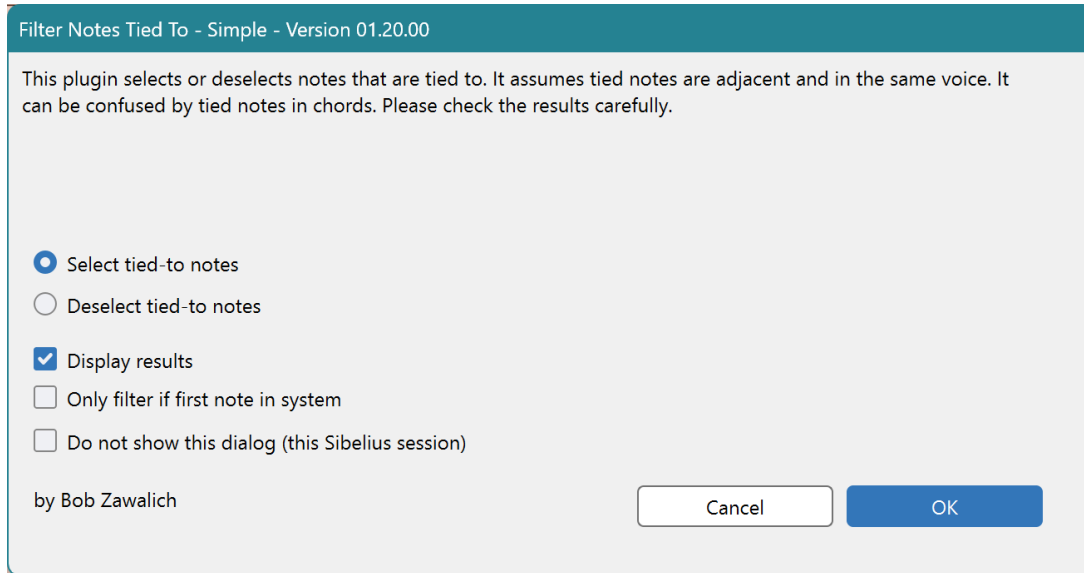
A B

Filter Notes Tied-To

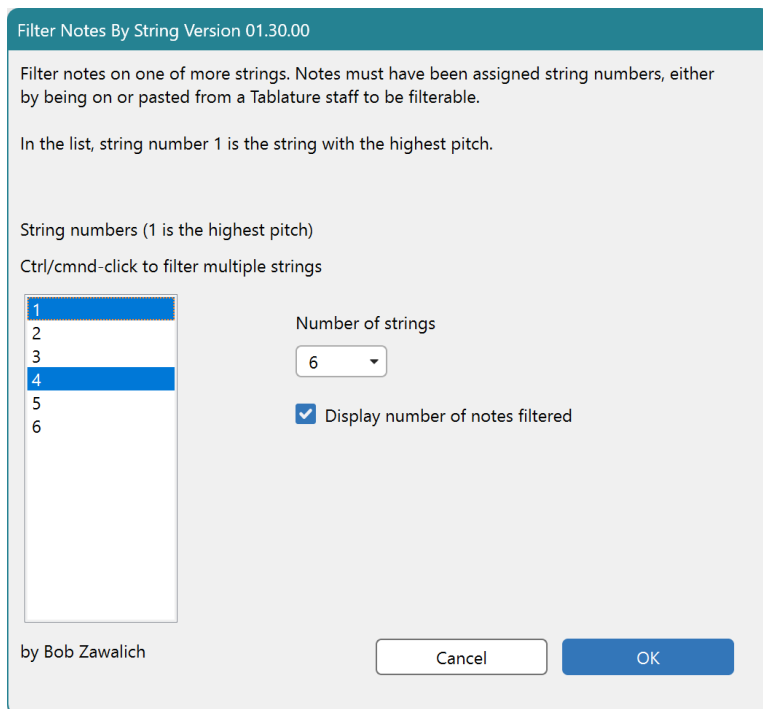
- No dialog. Improved version of **Filter Notes Tied To – Simple**
- Filters notes that are the target of notes that have a tie.
- *Requires Sibelius Ultimate 2022.5 or later*
- The equivalent of **Deselecting** tied-to notes is to run **Home>Filter>Non-tied Notes**

Filter Notes Tied To – Simple

- Filters notes that are the target of notes that have a tie.
- Less reliable mechanism for determining if a note is tied-to, which is why it is called "Simple".
- Can run in Sib 6 or later.



Filter Notes By String



Filter Notes And Rests

Filter Notes And Rests

<input checked="" type="checkbox"/> Filter Notes and Chords	<input checked="" type="checkbox"/> Voice 1
<input checked="" type="checkbox"/> Filter Rests	<input checked="" type="checkbox"/> Voice 2
<input checked="" type="checkbox"/> Filter Bar Rests	<input checked="" type="checkbox"/> Voice 3
	<input checked="" type="checkbox"/> Voice 4

by Bob Zawalich Version 01.25.00

Filter Notes With Dangling Ties

Filter Notes With Dangling Ties - Version 01.06.10 - by Bob Zawalich

This dialog only appears when there is no selection.

This plugin filters notes with dangling ties. The notes that start ties will be selected, not the ties themselves.

The plugin makes a reasonable guess that a tie is dangling. It looks at the following note or chord in the same voice. If it does not find the same note as a tied note, it assumes the tie is dangling. It will not catch ties across multiple notes or ties to other voices.

This is a blunt instrument at best. Check results carefully. The plugin Browse Selected Objects may be useful for checking.

Filter Note Arpeggios Jazz Artic

Filter These Objects

You will see this dialog if there the "Do not show" box is unchecked or if there is no selection in the score. Use it to change what is filtered. Option changes will stay in effect for this Sibelius session.

You must make a selection to perform a filter. If you want to filter the entire score, select the entire score (ctrl/cmd-a) and run the plugin again.

<input checked="" type="checkbox"/> Normal	<input checked="" type="checkbox"/> Fall
<input checked="" type="checkbox"/> Up	<input checked="" type="checkbox"/> Doit
<input checked="" type="checkbox"/> Down	<input checked="" type="checkbox"/> Scoop
	<input checked="" type="checkbox"/> Plop

Do not show this dialog again (this Sibelius session)

by Bob Zawalich Version 01.21.00

Not available in Advanced Filter